



Human SLE Peripheral Blood Mononuclear
Cells

Catalog Number: 1037

Lot Number: 3274JY16

Certificate of Analysis

Cell count	84 million per vial
Viability	95%
CD3+	69.3%
CD19+	20.6%
CD14+	6.0%
CD11c+	10.0%
CD16+	5.7%
CD56+	6.3%
Sterility	Negative for Bacteria, Yeast, and Fungi

Donor Information

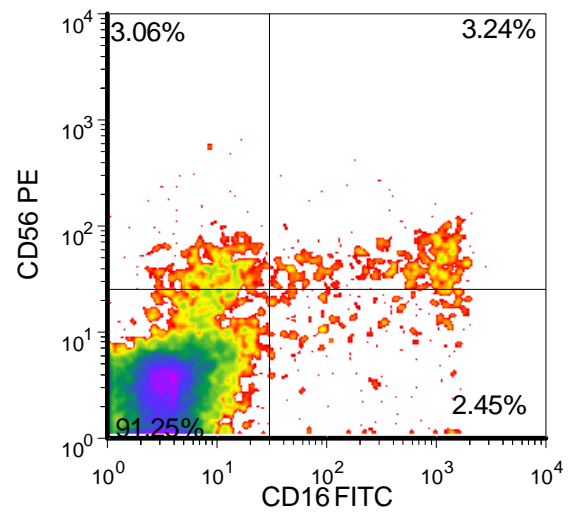
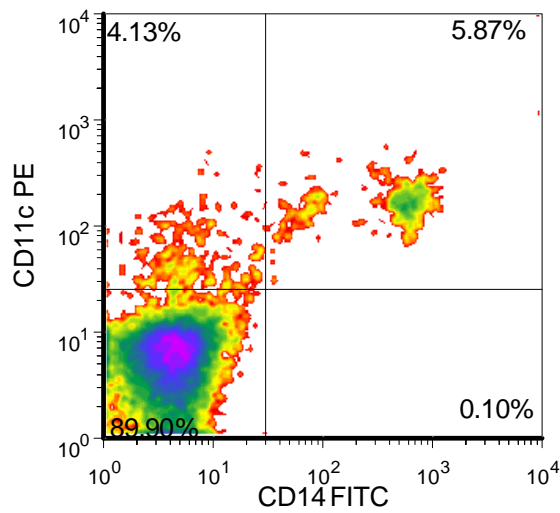
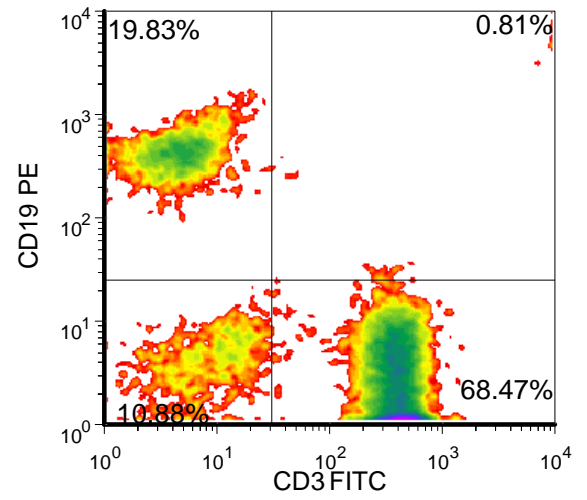
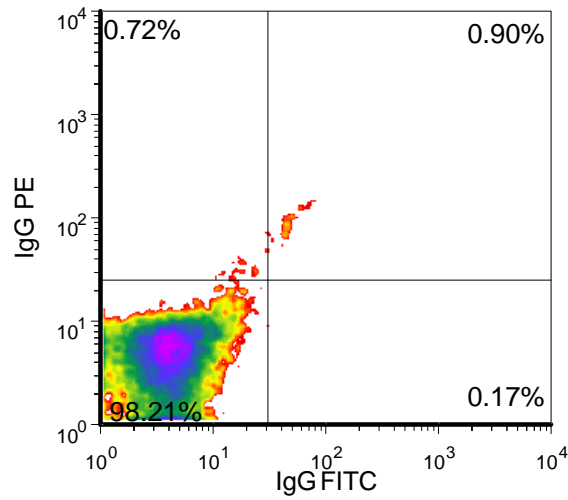
Donor ID	367
Age	57
Race	Female
Gender	Caucasian
Height	5' 9"
Weight	194
ABO Type	Unknown

Current diagnosis stage: Moderate

Renal Involvement: No

Donors are tested for the blood borne pathogens HIV-1 and 2, Hepatitis B, Hepatitis C and HTLV-1 and are negative. Cells should still be handled as if potentially infectious following biosafety level 2 procedures

FOR RESEARCH USE ONLY. NOT FOR DIAGNOSTIC OR THERAPEUTIC USE



FOR RESEARCH USE ONLY. NOT FOR DIAGNOSTIC OR THERAPEUTIC USE



Human SLE Peripheral Blood Mononuclear
Cells
Catalog Number: 1037
Lot Number: 3274JY16

Lot Specific Recall Antigen Response

	Interferon gamma	TNF alpha
Media Control	9	9
Tetanus Toxoid	7067	109
PHA	39257	967
LPS	26712	2957
Cytomegalovirus	49715	901

Values are pg/mL of culture medium collected 4 days after stimulation with antigen or mitogen

Current Medications

Medications	Dosage
Effexor	25 mg
Rexulti	10 mg
Xanax	1 mg
Lortab	5/325
Methotrexate	2.5 mg
Plaquenil	200 mg

Autoantibodies

Antigen	Titer
ANA	1:640
dsDNA	14 EU
SSa	4.1 AI
SSb	1.3 AI

FOR RESEARCH USE ONLY. NOT FOR DIAGNOSTIC OR THERAPEUTIC USE