
Certificate of Analysis

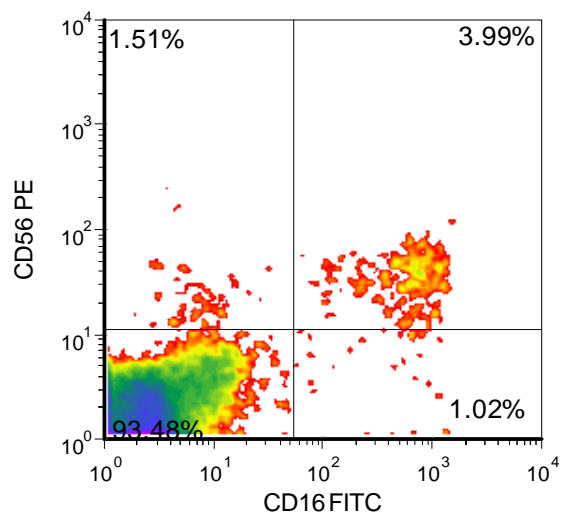
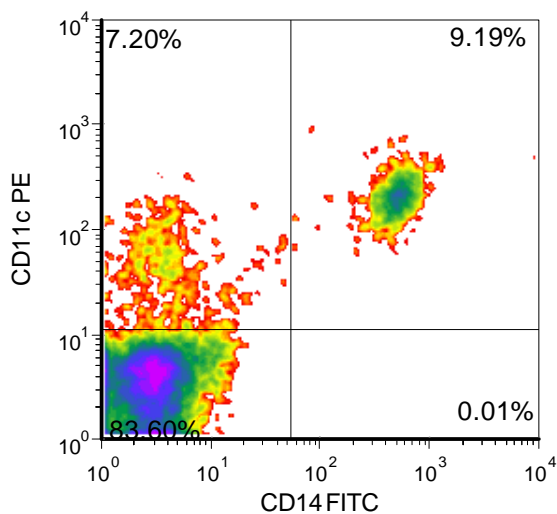
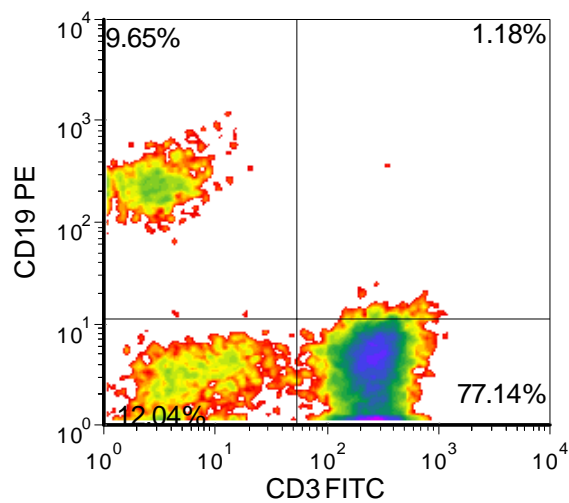
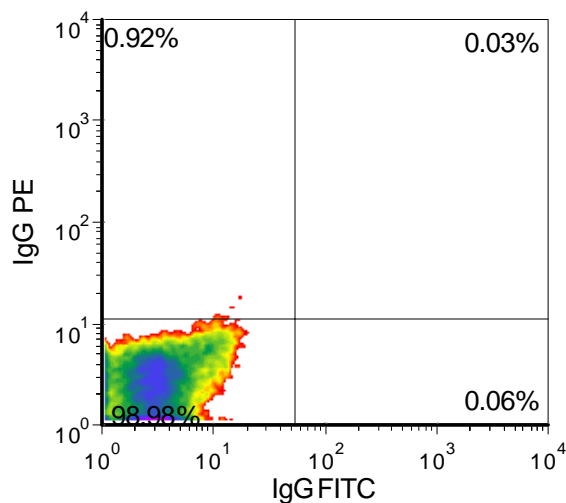
Cell count	100 million per vial
Viability	93%
CD3+	78.3%
CD19+	9.6%
CD14+	9.2%
CD11c+	16.4%
CD16+	5.0%
CD56+	5.5%
Sterility	Negative for Bacteria, Yeast, and Fungi

Donor Information

Donor ID	374
Age	43
Race	Caucasian
Gender	Female
Height	5' 2"
Weight	260 lbs.
ABO Type	Unknown
Date of First Diagnosis	2009

Donors are tested for the blood borne pathogens HIV-1 and 2, Hepatitis B, Hepatitis C and HTLV-1 and are negative. Cells should still be handled as if potentially infectious following biosafety level 2 procedures

FOR RESEARCH USE ONLY. NOT FOR DIAGNOSTIC OR THERAPEUTIC USE



FOR RESEARCH USE ONLY. NOT FOR DIAGNOSTIC OR THERAPEUTIC USE

Lot Specific Recall Antigen Response

	Interferon gamma	TNF alpha
Media Control	2	2
Tetanus Toxoid	3443	35
PHA	>85000	1368
LPS	>17000	427
Cytomegalovirus	3	5

Values are pg/mL of culture medium collected 4 days after stimulation with antigen or mitogen

Current Medications

Medications	Dosage
Humira	40 mg
Lantus	20 mg
Humalog	20 mg
Lasix	40 mg
Lotensin	20 mg
Levothyroxine	125 mcg
Prednisone	10 mg
Hydrocodone	5 mg

Autoantibodies

Antibody	Level
ANA	1:640
dsDNA	2.7 IU/ml
SSa	11 AI

Note: Lab values determined September 7, 2016.

Current diagnosis stage: Moderate

Renal Involvement: No

FOR RESEARCH USE ONLY. NOT FOR DIAGNOSTIC OR THERAPEUTIC USE