

Certificate of Analysis

Cell count	2 million per vial
Viability	95%
CD8+	96%
CD8+E6 Dextramer+	1.0%
CD8+HSV Dextramer+	63.8%
Sterility	Negative for Bacteria, Yeast, Fungi and Mycoplasma

Donor Information

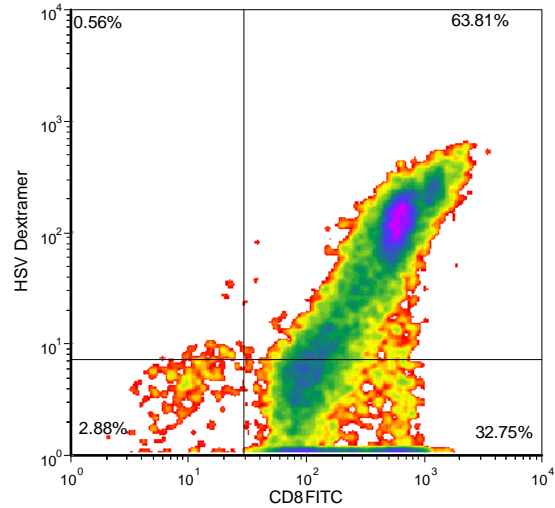
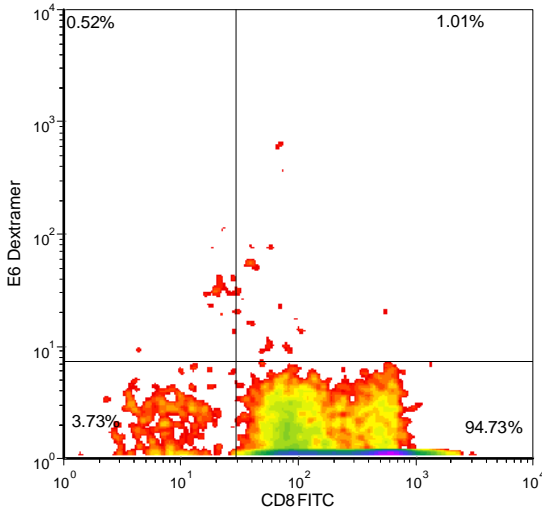
Donor ID	358
Age	51
Gender	Female
Race	Caucasian
Height	5'6"
Weight	230
ABO Type	O Positive

HLA typing

	Allele 1	Allele 2
HLA-A	*0201	*0201
HLA-B	*44	*15
HLA-C	*03	*05
HLA-DRB1	*0103	*0404

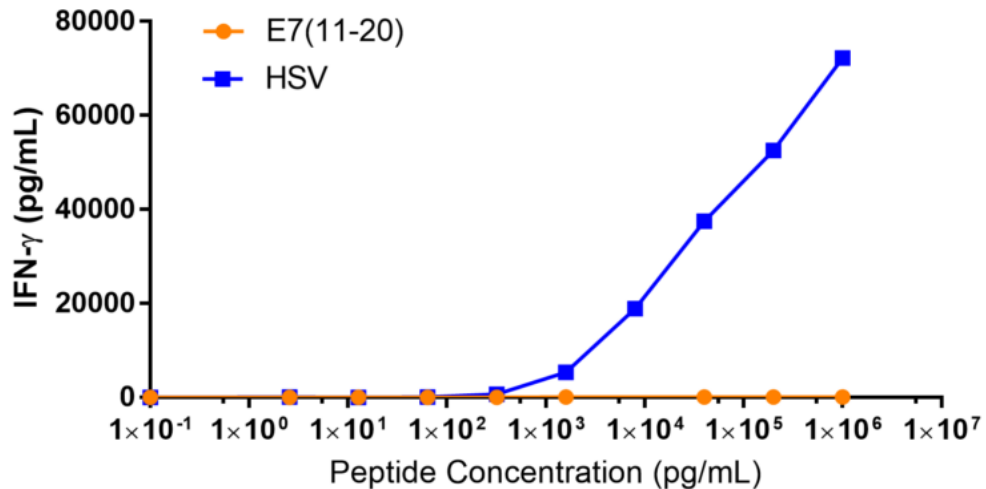
Donors are tested for the blood borne pathogens HIV-1 and 2, Hepatitis B, Hepatitis C and HTLV-1 and are negative. Cells should still be handled as if potentially infectious following biosafety level 2 procedures

FOR RESEARCH USE ONLY. NOT FOR DIAGNOSTIC OR THERAPEUTIC USE



E6 Dextramer = HPV E6 peptide (TIHDIILECV)/HLA-A*0201-PE MHC Dextramer (Immudex, Copenhagen, Denmark). HSV Dextramer PE = HSV gD₁₅₃₋₆₁ peptide (SLPITVYYA)/HLA-A*0201-PE MHC Dextramer (Immudex, Copenhagen, Denmark)

IFN-gamma Secretion



20,000 T cells were plated in a 96-well round-bottom plate alone or in the presence of 20,000 T2 cells, a B-LCL expressing HLA-A*0201) alone or in the presence of increasing concentrations HLA-A*0201 restricted HPV E7₁₁₋₂₀ peptide (YMLDLQPETT) or HLA-A*0201 restricted HSV gD₁₅₃₋₆₁ peptide (SLPITVYYA). After an overnight (18-24h) incubation period, supernatant was collected from each well. IFN-γ concentration was analyzed using the Meso Scale Discovery IFN-γ assay.

FOR RESEARCH USE ONLY. NOT FOR DIAGNOSTIC OR THERAPEUTIC USE