

Certificate of Analysis

Cell count	2 million per vial
Viability	92%
CD8+	99.7%
CD8+ EBVPentamer+	0.2%
CD8+ CMVTetramer+	92.2%
Sterility	Negative for Bacteria, Yeast, and Fungi

Donor Information

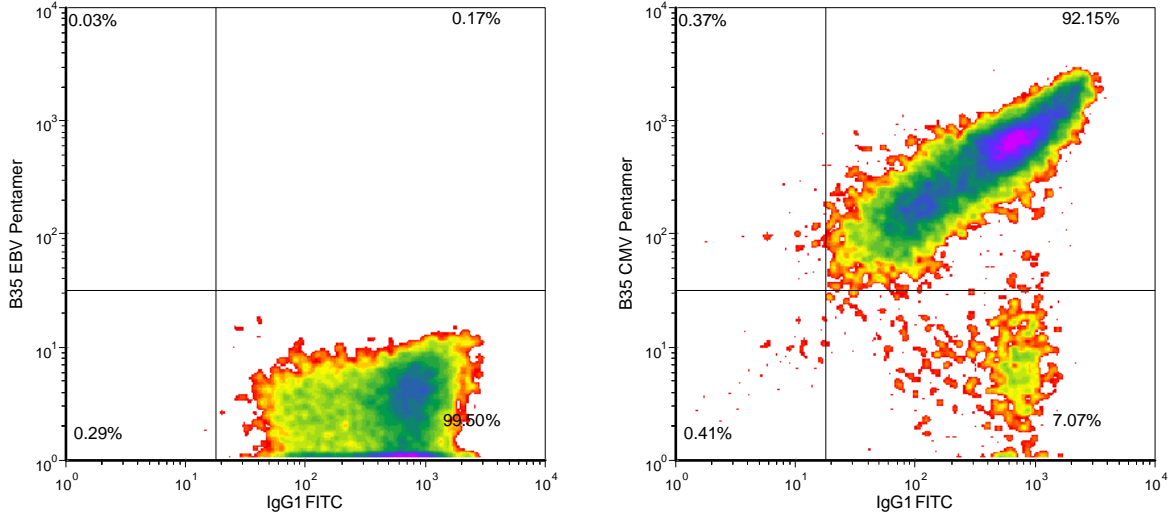
Donor ID	186
Age	27
Gender	Male
Race	Caucasian
Height	5'11"
Weight	175
ABO Type	O Positive

HLA typing

	Allele 1	Allele 2
HLA-A	01	03
HLA-B	08	35
HLA-C	04	07
HLA-DRB1	01	15

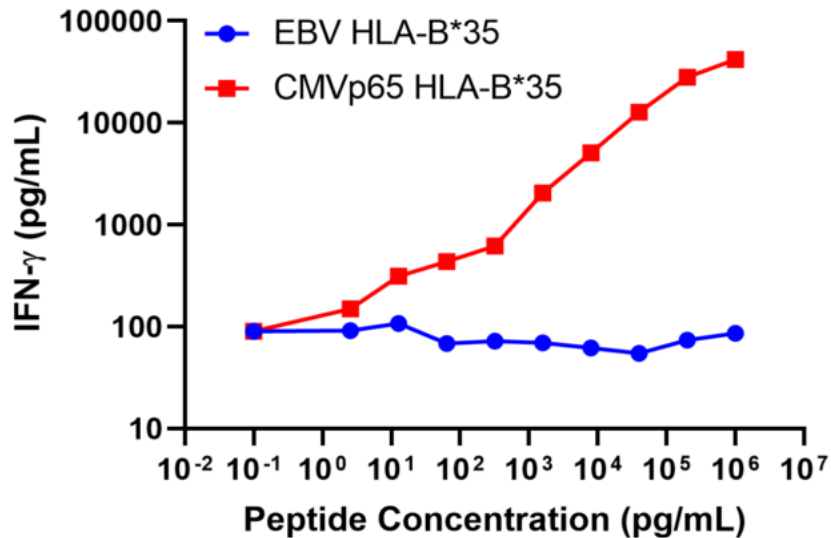
Donors are tested for the blood borne pathogens HIV-1 and 2, Hepatitis B, Hepatitis C and HTLV-1 and are negative. Cells should still be handled as if potentially infectious following biosafety level 2 procedures

FOR RESEARCH USE ONLY. NOT FOR DIAGNOSTIC OR THERAPEUTIC USE.



B35 EBV Pentamer = HLA-B35-restricted EBNA peptide (HPVGEADYFEY)/ HLA-B*3501 R-PE labelled Pro5 MHC Pentamer (PROIMMUNE, Sarasota, FL)
B35 CMV Tetramer = HLA-B35-restricted CMV pp65 peptide (IPSINVHHY)/ HLA-B*3501 R-PE labelled iTag MHC Tetramer (MBL International, Woburn, MA)?

IFN-gamma Secretion



20,000 T cells were plated in a 96-well round-bottom plate alone or in the presence of 20,000 213 B-LCLs, expressing HLA-B*35) alone or in the presence of increasing concentrations OF HLA-B*35 restricted CMV pp65 peptide (IPSINVHHY) or HLA-B*35 restricted EBV peptide (HPVGEADYFEY). Culture media used in this assay is RPMI 1640 + 10% FBS. After an overnight (18-24h) incubation period, supernatant was collected from each well. IFN- γ concentration was analyzed using the Meso Scale Discovery IFN- γ assay.

FOR RESEARCH USE ONLY. NOT FOR DIAGNOSTIC OR THERAPEUTIC USE.