

Certificate of Analysis

Cell count	2 million per vial
Viability	88%
CD4+	97.9%
CD4+CD25+	94.4%
CD25+CD127-	69.0%
Sterility Testing	Negative for bacteria, fungi and mycoplasma

Donor Information

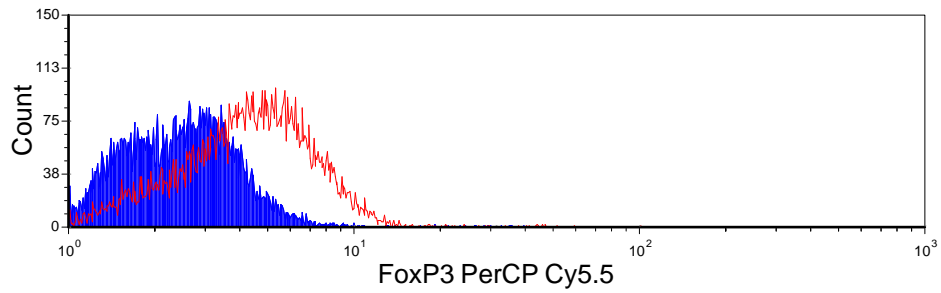
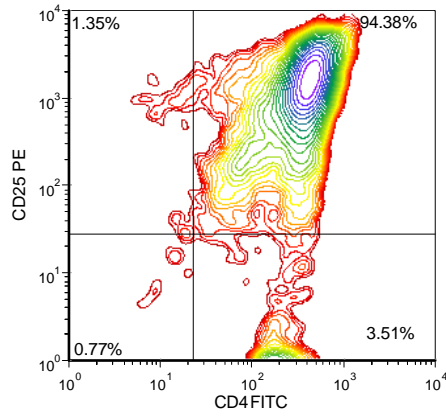
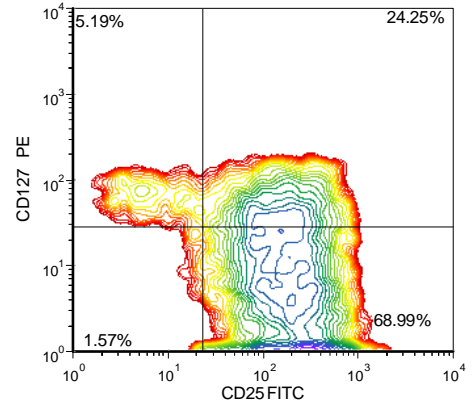
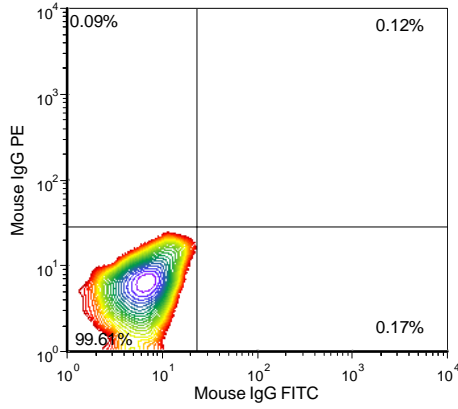
Donor ID	287
Sex	Female
Age	47
Race	Caucasian
Height	5'7"
Weight	130 lbs
ABO Type	B Negative

HLA typing

	Allele 1	Allele 2
HLA-A	03	68
HLA-B	15	44
HLA-C	03	07
HLA-DRB1	01	15

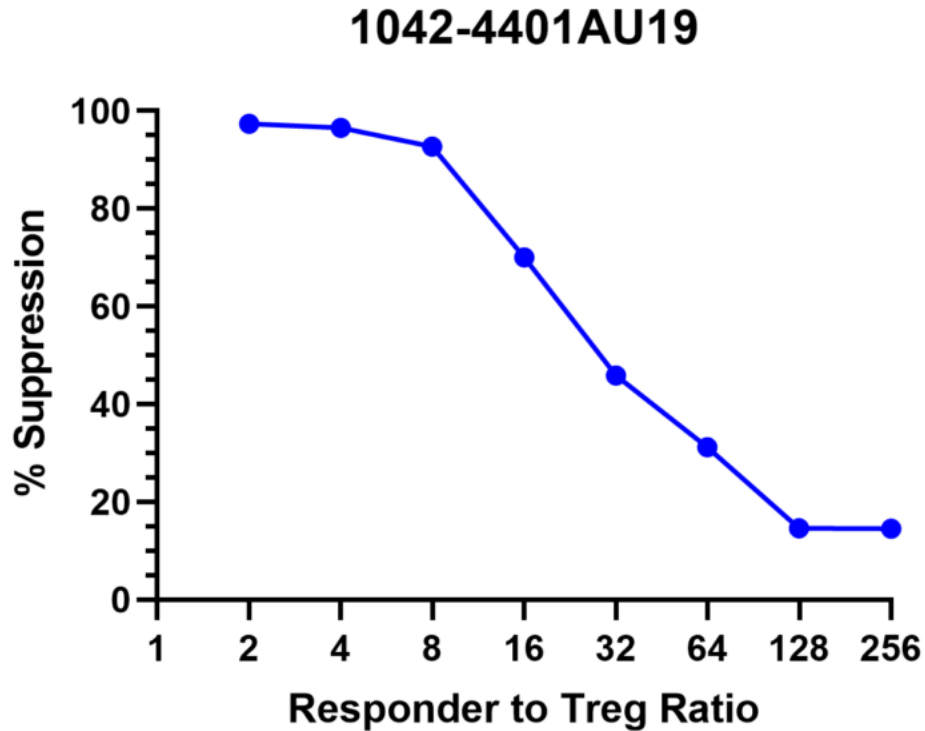
Donors are tested for the blood borne pathogens HIV-1 and 2, Hepatitis B, Hepatitis C and HTLV-1 and are negative. Cells should still be handled as if potentially infectious following biosafety level 2 procedures

FOR RESEARCH USE ONLY. NOT FOR DIAGNOSTIC OR THERAPEUTIC USE.



Red histogram designates intracellular staining with isotype control (mouse IgG PerCP Cy5.5). Filled blue histogram designates intracellular staining with anti-FoxP3 PerCP Cy5.5 antibody.

FOR RESEARCH USE ONLY. NOT FOR DIAGNOSTIC OR THERAPEUTIC USE.



Co-Culture of Tregs Resulted in Suppression of Anti- CD3-mediated CD8+ T Cell Proliferation of Allogeneic Peripheral Blood Mononuclear Cells (PBMCs). In short, in a 96 well plate, 250,000 CFSE-labelled allogeneic responder PBMC were plated/well in the presence of 0.2 µg/mL anti-CD3 and varying number of Tregs as shown in the chart above. The plate was incubated in a 37 deg C, 6% CO2 incubator. After 5 days of culture, individual wells were harvested and labelled with PE-labelled anti-CD8 mAb. Data was acquired on a flow cytometer and the extent of proliferation (Percent Divided, PD) was analyzed using FCS Express 4.0. % Suppression = 100- (PD in the presence of Treg/PD in the absence of Treg) x 100.