

## Certificate of Analysis

<b>Cell count</b>	1.8 million per vial
<b>Viability</b>	84%
<b>CD4+</b>	96.3%
<b>CD45RO+</b>	98.4%
<b>CD62L+</b>	73.4%
<b>Sterility</b>	Negative for Bacteria, Yeast and Fungi

### *Donor Information*

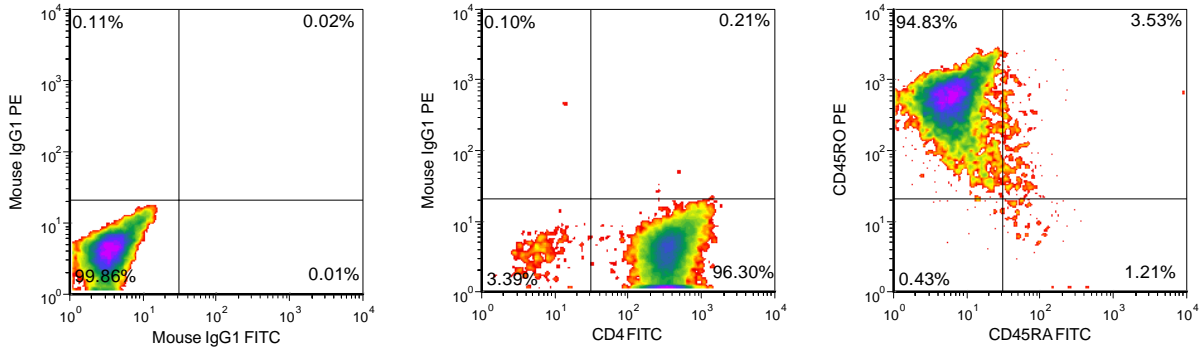
<b>Donor ID</b>	401
<b>Age</b>	29
<b>Gender</b>	Female
<b>Race</b>	Caucasian
<b>Height</b>	5'3"
<b>Weight</b>	277
<b>ABO Type</b>	A negative

### *HLA typing*

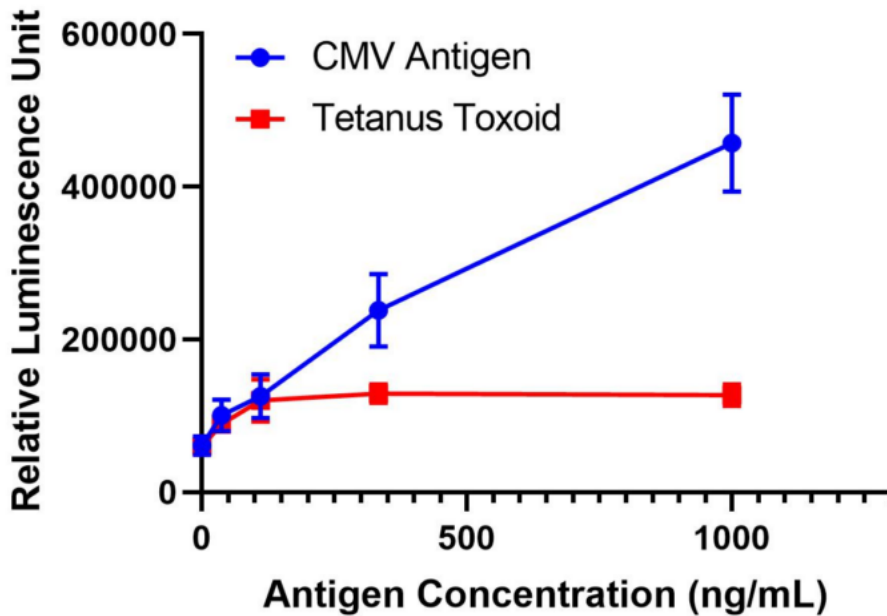
	<b>Allele 1</b>	<b>Allele 2</b>
<b>HLA-A</b>	*0201	*0201
<b>HLA-B</b>	*18	*40
<b>HLA-C</b>	*03	*07
<b>HLA-DRB1</b>	*08	*12

Donors are tested for the blood borne pathogens HIV-1 and 2, Hepatitis B, Hepatitis C and HTLV-1 and are negative. Cells should still be handled as if potentially infectious following biosafety level 2 procedures

**FOR RESEARCH USE ONLY. NOT FOR DIAGNOSTIC OR THERAPEUTIC USE.**



### Antigen-Specific Proliferative Response



20,000 T cells were plated post-thaw in a 96-well round-bottom plate in the presence of 20,000 autologous B-LCL (mitomycin-C treated) alone or in the presence of increasing concentrations of CMV antigen or Tetanus Toxoid (negative control antigen). Culture medium used in this assay is X-VIVO 15 (Lonza). After a 4 day incubation period, cell proliferation is measured using the Cell Titer Glo reagent (Promega, Madison, WI). Relative Luminescence Unit is plotted against antigen concentration.

**FOR RESEARCH USE ONLY. NOT FOR DIAGNOSTIC OR THERAPEUTIC USE.**