

## Certificate of Analysis

Cell count            2 million per vial  
Viability             96%

### *Donor Information*

Donor ID            224  
Age                  52  
Gender              Female  
Race                Caucasian  
Height              5'3"  
Weight              180  
ABO Type          B negative

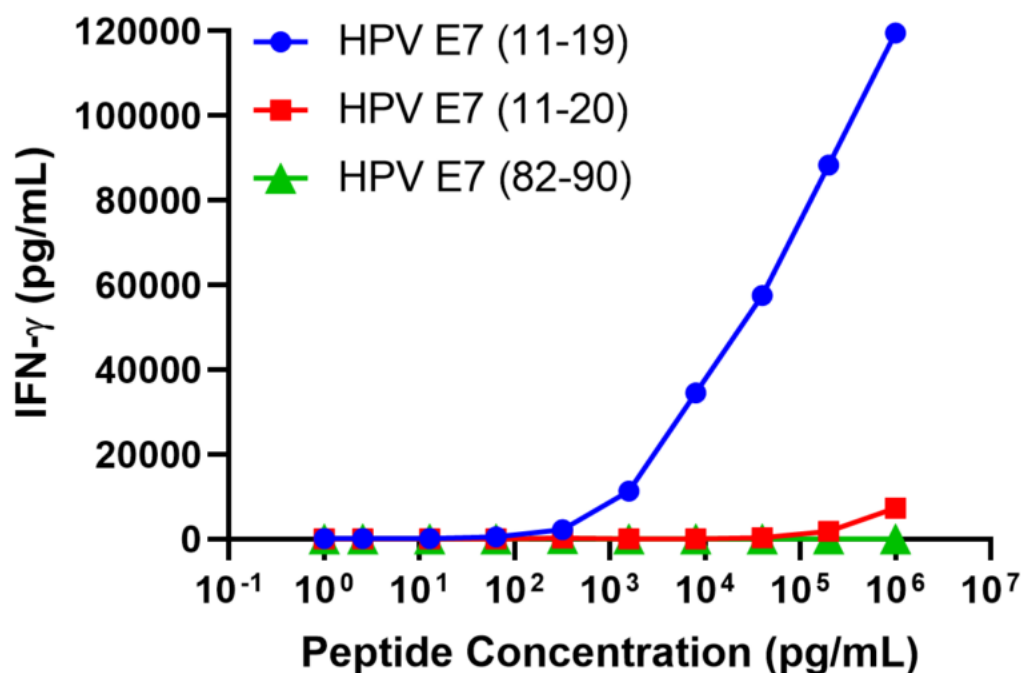
### *HLA typing*

	Allele 1	Allele 2
HLA-A	*0201	*0201
HLA-B	*07	*15
HLA-C	*03	*07
HLA-DRB1	*13	*15

Donors are tested for the blood borne pathogens HIV-1 and 2, Hepatitis B, Hepatitis C and HTLV-1 and are negative. Cells should still be handled as if potentially infectious following biosafety level 2 procedures

**FOR RESEARCH USE ONLY. NOT FOR DIAGNOSTIC OR THERAPEUTIC USE**

IFN-gamma Secretion



20,000 T cells were plated in a 96-well round-bottom plate alone or in the presence of 20,000 T2 cells (a B-LCL expressing HLA-A\*0201), alone or in the presence of increasing concentrations HLA-A\*0201 restricted HPV E7<sup>11-20</sup> peptide (YMLDLQPETT), HLA-A\*0201 restricted HPV/E7<sup>11-19</sup> peptide (YMLDLQPET), or HLA-A\*0201 restricted HPV/E7(82-90) peptide (LLMGTLGIV). Assay media used was RPMI-1640 + 10% FBS. After an overnight (18-24h) incubation period, supernatant was collected from each well. IFN- $\gamma$  concentration was analyzed using the Meso Scale Discovery IFN- $\gamma$  assay.