

## *Certificate of Analysis*

<b>Cell count</b>	1.5 million per vial
<b>Viability</b>	96%
<b>CD8+</b>	80.6%
<b>CD8+NegativeTetramer+</b>	0.1%
<b>CD8+CMVpp65Tetramer+</b>	30.6%
<b>Sterility</b>	Negative for Bacteria, Yeast and Fungi

### *Donor Information*

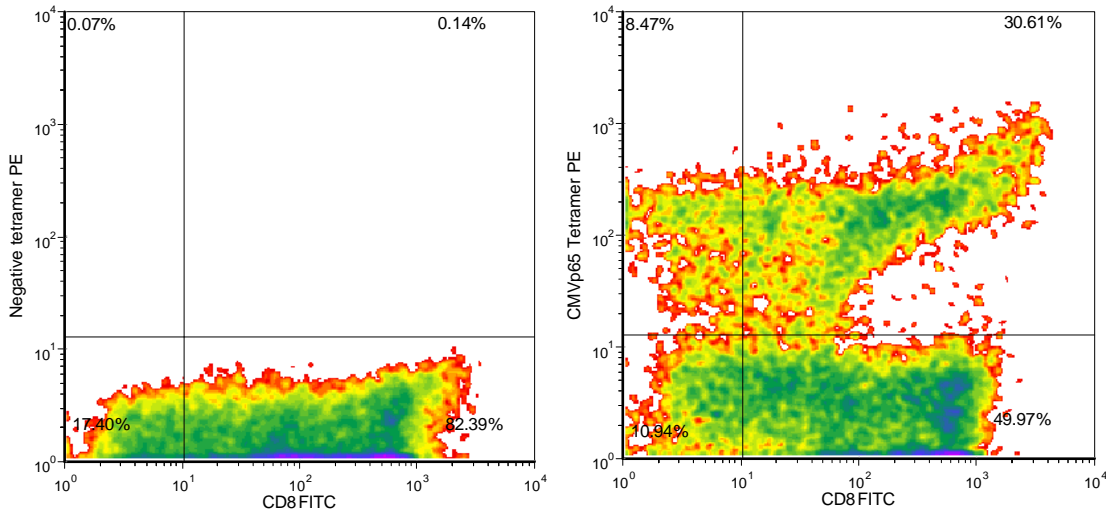
<b>Donor ID</b>	401
<b>Age</b>	30
<b>Gender</b>	Female
<b>Race</b>	Caucasian
<b>Height</b>	5'3"
<b>Weight</b>	277
<b>ABO Type</b>	A negative

### *HLA typing*

	<b>Allele 1</b>	<b>Allele 2</b>
<b>HLA-A</b>	*0201	*0201
<b>HLA-B</b>	*18	*40
<b>HLA-C</b>	*03	*07
<b>HLA-DRB1</b>	*08	*12

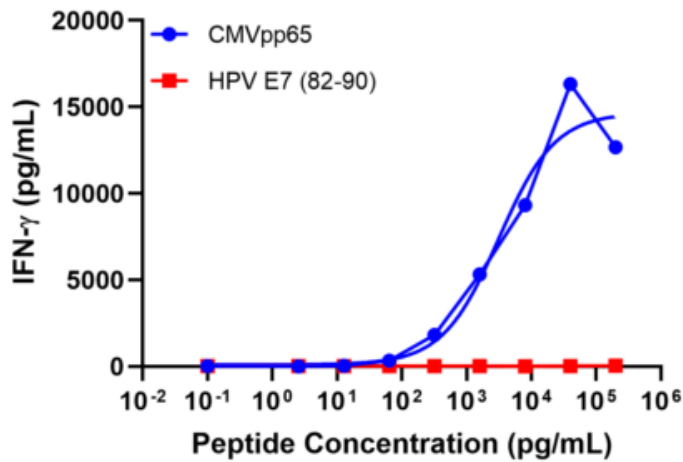
Donors are tested for the blood borne pathogens HIV-1 and 2, Hepatitis B, Hepatitis C and HTLV-1 and are negative. Cells should still be handled as if potentially infectious following biosafety level 2 procedures

**FOR RESEARCH USE ONLY. NOT FOR DIAGNOSTIC OR THERAPEUTIC USE**



Neg tetramer PE = HLA-A\*0201-PE iTag MHC Tetramer (MBL International, Woburn, MA); CMV A2 tetramer = CMV pp65 peptide (NLVPMVATV)/ HLA-A\*0201-PE iTag MHC Tetramer (MBL International, Woburn, MA)

### IFN-gamma Secretion



20,000 T cells were plated post-thaw in a 96-well round-bottom plate in the presence of 20,000 T2 cells, a B-LCL expressing HLA-A\*0201) alone or in the presence of increasing concentrations of HLA-A\*0201 restricted CMV pp65 peptide (NLVPMVATV) or HLA-A\*0201 restricted HPV E7<sub>82-90</sub> peptide (LLMGTLGIV). Culture media used in this assay is RPMI 1640 + 10% FBS. After an overnight (18-24h) incubation period, supernatant was collected from each well. IFN- $\gamma$  concentration was analyzed using the Meso Scale Discovery IFN- $\gamma$  assay.

**FOR RESEARCH USE ONLY. NOT FOR DIAGNOSTIC OR THERAPEUTIC USE**