

## Certificate of Analysis

Cell count	8.3 million per vial
Viability	94%
CD3+	62.3%
CD19+	16.1%
CD14+	14.6%
CD11c+	19.3%
CD16+	6.1%
CD56+	13.1%
Sterility	Negative for Bacteria, Yeast, and Fungi

### *Donor Information*

Donor ID	501
Age	38
Race	Hispanic
Gender	Male
Height	5' 9"
Weight	167
ABO Type	O Positive

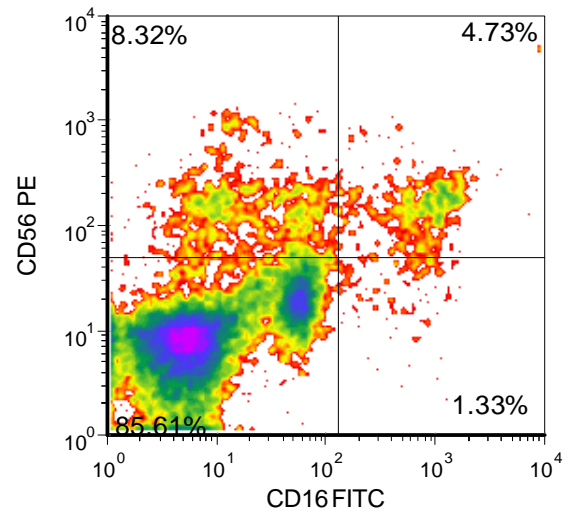
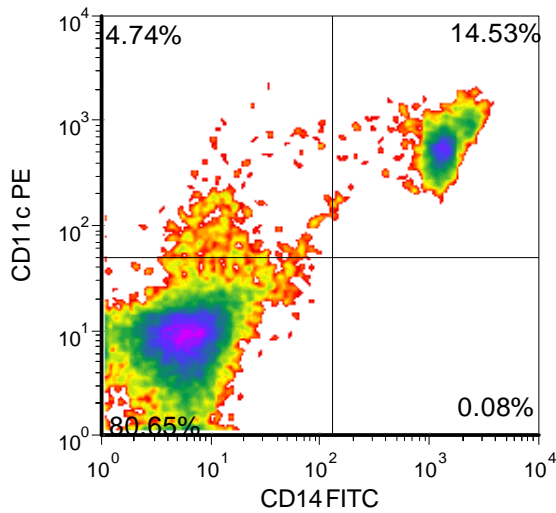
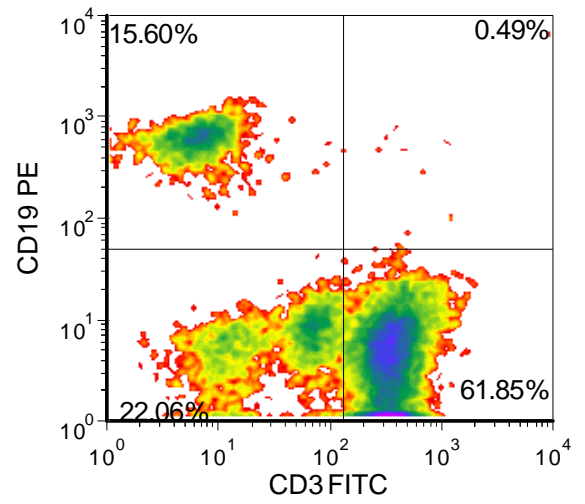
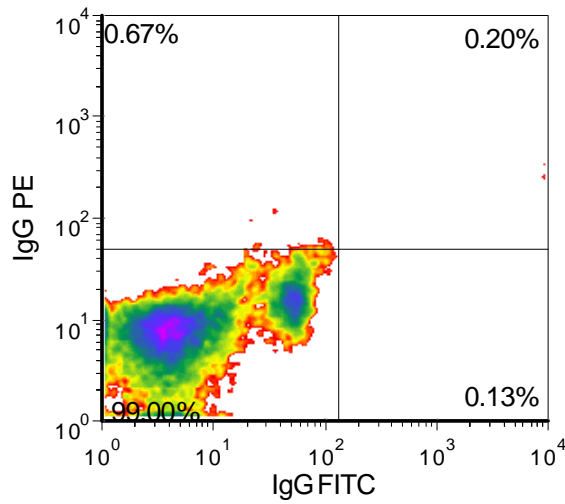
### *HLA typing*

	Allele 1	Allele 2
HLA-A	11:01	32:01
HLA-B	14:02	41:01
HLA-C	02:02	17:01
HLA-DRB1	01:02	03:01

**Note: Medications: Insulin, Depakote, Abilify, Lisinepril, Xanax, Clonopin. Donor is seropositive for CMV.**

Donors are tested for the blood borne pathogens HIV-1 and 2, Hepatitis B, Hepatitis C and HTLV-1 and are negative. Cells should still be handled as if potentially infectious following biosafety level 2 procedures

**FOR RESEARCH USE ONLY. NOT FOR DIAGNOSTIC OR THERAPEUTIC USE**



FOR RESEARCH USE ONLY. NOT FOR DIAGNOSTIC OR THERAPEUTIC USE



**Type 1 Diabetic Peripheral Blood Mononuclear Cells**  
**Catalog Number: 1130**  
**Lot Number: 4586FE20**

---

***Lot Specific Recall Antigen Response***

	<b>Interferon gamma</b>	<b>TNF alpha</b>
<b>Media Control</b>	0	1
<b>Tetanus Toxoid</b>	7147	19
<b>PHA</b>	175902	209
<b>LPS</b>	57014	632
<b>Cytomegalovirus</b>	6736	37

Values are pg/mL of culture medium collected 4 days after stimulation with antigen or mitogen

**FOR RESEARCH USE ONLY. NOT FOR DIAGNOSTIC OR THERAPEUTIC USE**

**833-CELLERO - [www.cellero.com](http://www.cellero.com) - [info@cellero.com](mailto:info@cellero.com)**