

## Certificate of Analysis

Cell count	1.4 million per vial
Viability	94%
CD4+	99.7%
CD25+CD127-	83.7%
% Suppression at 1:8 Treg:Effector Ratio	75.6%
Sterility Testing	<b>Negative for bacteria, and fungi</b>

### *Donor Information*

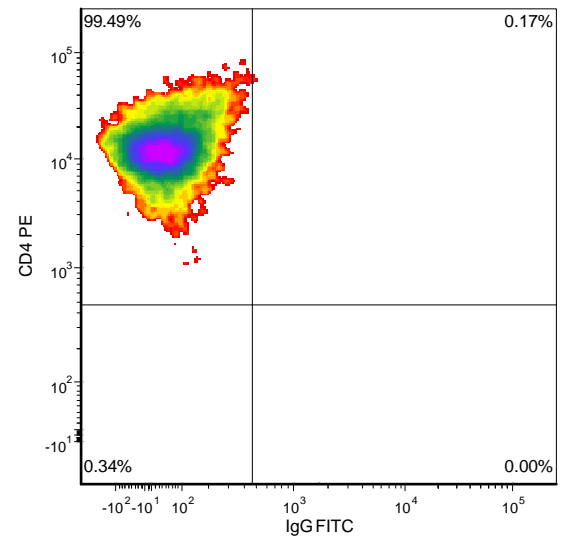
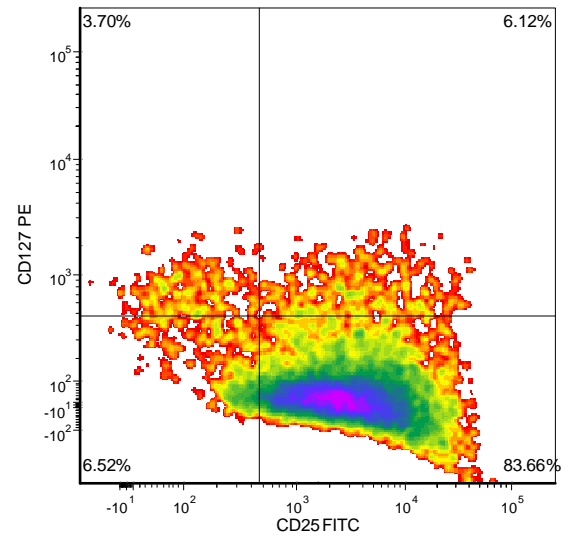
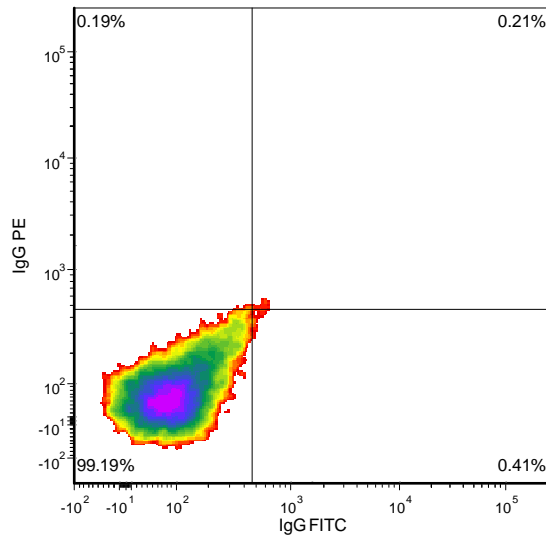
Donor ID	399
Sex	Male
Age	26
Race	Caucasian
Height	5'9"
Weight	175 lbs
ABO Type	A positive

### *HLA typing*

	Allele 1	Allele 2
HLA-A	03	31
HLA-B	15	44
HLA-C	03	05
HLA-DRB1	04	10

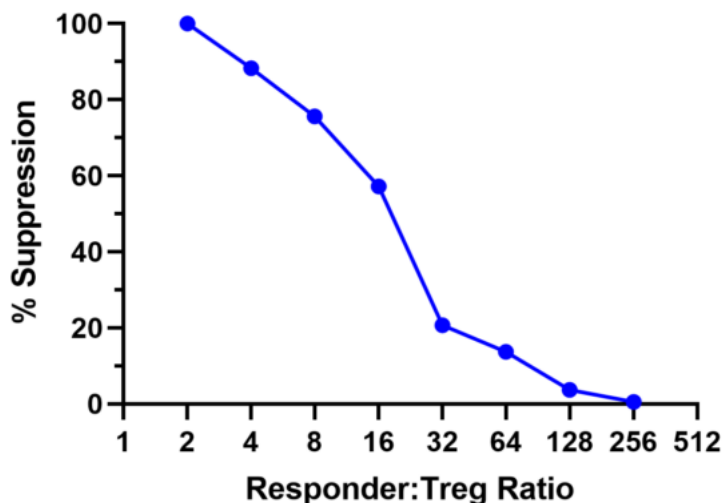
Donors are tested for the blood borne pathogens HIV-1 and 2, Hepatitis B, Hepatitis C and HTLV-1 and are negative. Cells should still be handled as if potentially infectious following biosafety level 2 procedures

**FOR RESEARCH USE ONLY. NOT FOR DIAGNOSTIC OR THERAPEUTIC USE.**



FOR RESEARCH USE ONLY. NOT FOR DIAGNOSTIC OR THERAPEUTIC USE.

**Lot. 4596FE20**



**Co-Culture of Tregs Resulted in Suppression of Anti- CD3-mediated CD8+ T Cell Proliferation of Allogeneic Peripheral Blood Mononuclear Cells (PBMCs).** In short, in a 96 well plate, 250,000 CFSE-labelled allogeneic responder PBMC were plated/well in the presence of 0.2 µg/mL anti-CD3 and varying number of Tregs at responder to Treg ratio shown in the chart above. The plate was incubated in a 37 deg C, 6% CO2 incubator. After 5 days of culture, individual wells were harvested and labelled with PE-labelled anti-CD8 mAb. Data was acquired on a flow cytometer and the extent of proliferation (Division Index, DI) was analyzed using FCS Express 4.0. % Suppression = 100- (DI in the presence of Treg/DI in lthe absence of Treg) x 100.