

## Certificate of Analysis

Cell count	11.5 million per vial
Viability	95%
CD3+	69.0%
CD19+	10.3%
CD14+	8.3%
CD11c+	14.8%
CD16+	10.5%
CD56+	10.5%
Sterility	Negative for Bacteria, Yeast, and Fungi

### *Donor Information*

Donor ID	526
Age	29
Race	Caucasian
Gender	Female
Height	62 inches
Weight	175 lbs
ABO Type	B Positive

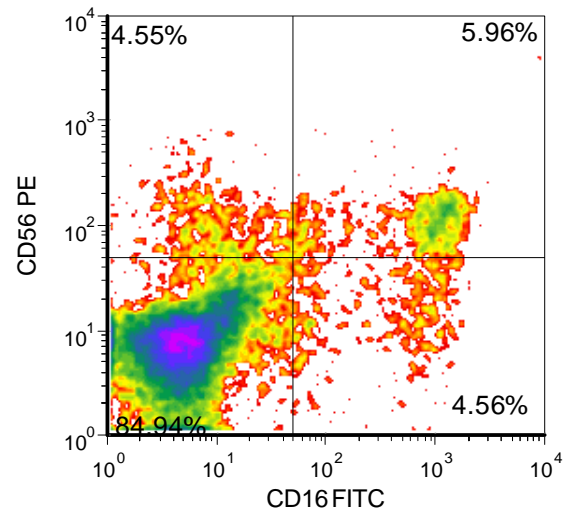
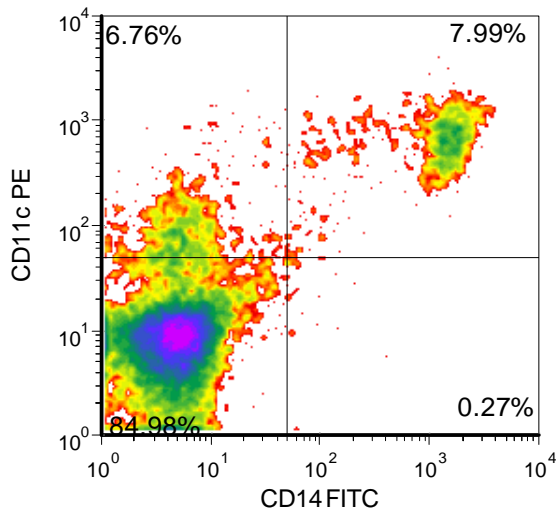
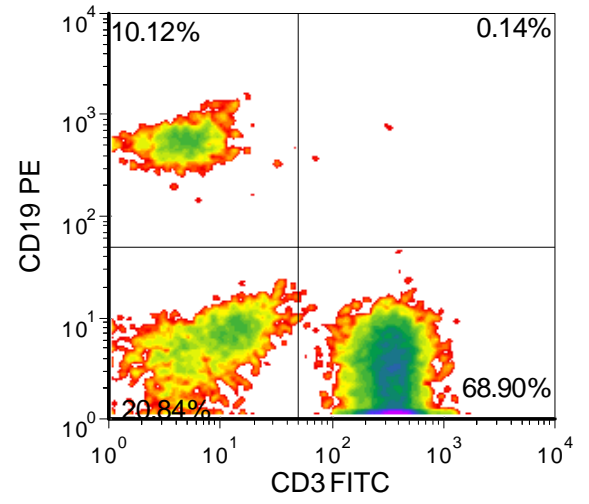
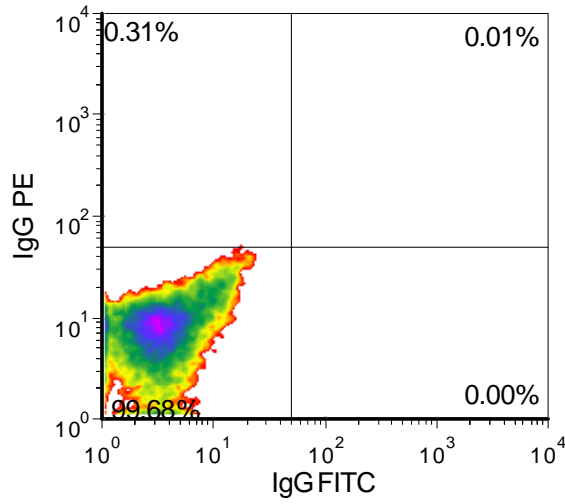
### *HLA typing*

	Allele 1	Allele 2
HLA-A	24:02	29:02
HLA-B	44:02	44:03
HLA-C	02:02	16:01
HLA-DRB1	07:01	13:01

**Note:**

Donors are tested for the blood borne pathogens HIV-1 and 2, Hepatitis B, Hepatitis C and HTLV-1 and are negative. Cells should still be handled as if potentially infectious following biosafety level 2 procedures

**FOR RESEARCH USE ONLY. NOT FOR DIAGNOSTIC OR THERAPEUTIC USE**



FOR RESEARCH USE ONLY. NOT FOR DIAGNOSTIC OR THERAPEUTIC USE

***Lot Specific Recall Antigen Response***

	<b>Interferon gamma</b>	<b>TNF alpha</b>
<b>Media Control</b>	0	1
<b>Tetanus Toxoid</b>	1487	12
<b>PHA</b>	151571	617
<b>LPS</b>	5715	244
<b>Cytomegalovirus</b>	2678	13

Values are pg/mL of culture medium collected 4 days after stimulation with antigen or mitogen