

Certificate of Analysis

Cell Count	>2 Million per vial
Viability	93%
CD4+	98.7%
CD25+ CD127-	71.8%
% Suppression at 1:8 Treg:Effector Ratio	67%
Sterility Testing	Negative for bacteria and fungi

Donor Information

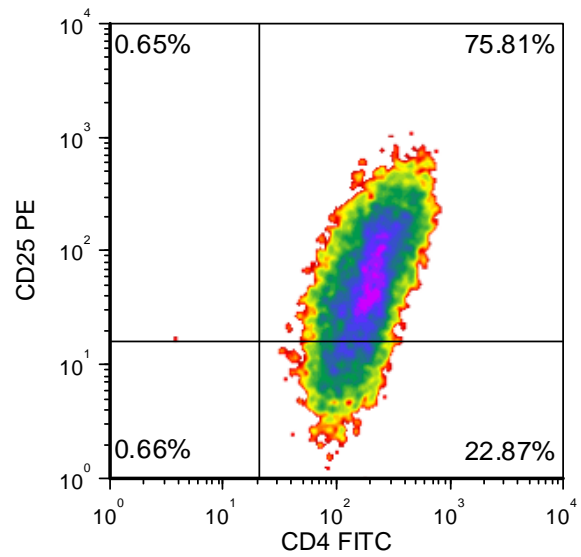
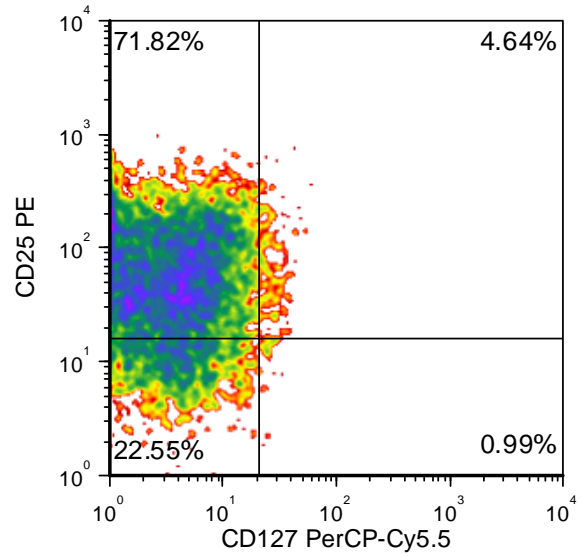
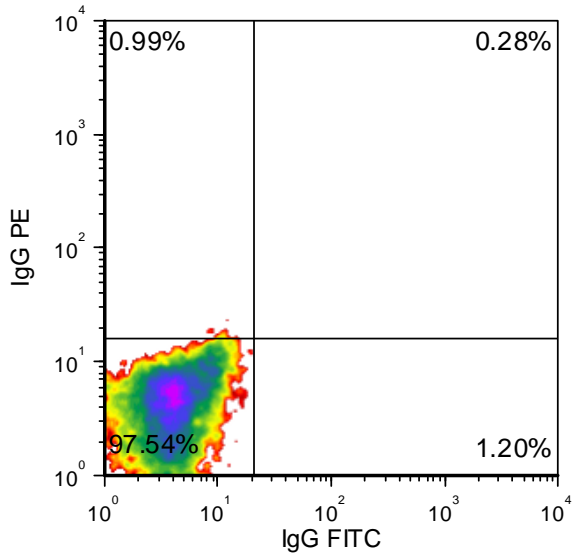
Donor ID	230
Sex	Female
Age	54
Race	Caucasian
Height	5'8"
Weight	150
ABO Type	A Positive

HLA typing

	Allele 1	Allele 2
HLA-A	24:02	26:01
HLA-B	07:02	27:05
HLA-C	11:02	07:02
HLA-DRB1	02:01	01:01

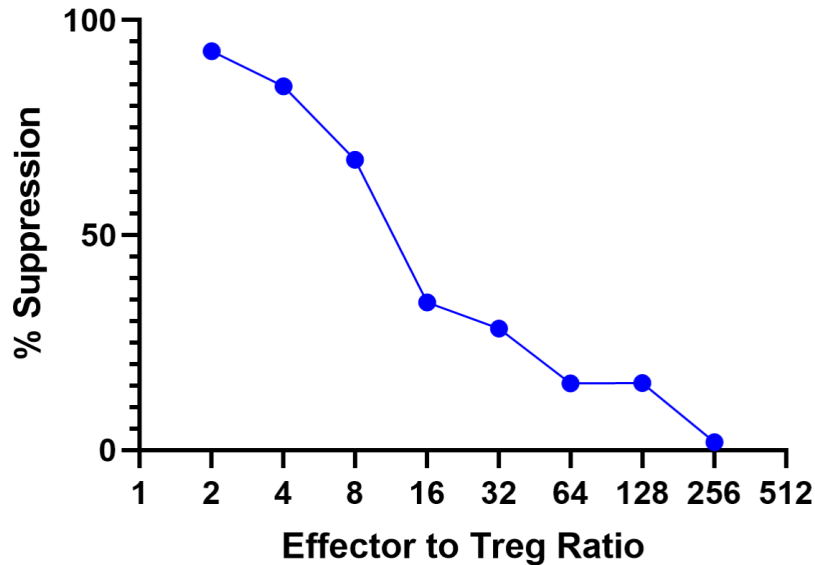
Donors are tested for the blood borne pathogens HIV-1 and 2, Hepatitis B, Hepatitis C and HTLV-1 and are negative. Cells should still be handled as if potentially infectious following biosafety level 2 procedures.

FOR RESEARCH USE ONLY. NOT FOR DIAGNOSTIC OR THERAPEUTIC USE.



FOR RESEARCH USE ONLY. NOT FOR DIAGNOSTIC OR THERAPEUTIC USE.

4945NV20



Co-Culture of Tregs Resulted in Suppression of Anti- CD3-mediated CD8+ T Cell Proliferation of Allogeneic Peripheral Blood Mononuclear Cells (PBMCs). In short, in a 96 well plate, 250,000 CFSE-labelled allogeneic responder PBMC were plated/well in the presence of 0.2 µg/mL anti-CD3 and varying number of Tregs at responder to Treg ratio shown in the chart above. The plate was incubated in a 37 deg C, 6% CO₂ incubator. After 5 days of culture, individual wells were harvested and labelled with PE-labelled anti-CD8 mAb. Data was acquired on a flow cytometer and the extent of proliferation (Division Index, DI) was analyzed using FCS Express 4.0. % Suppression = 100- (DI in the presence of Treg/DI in the absence of Treg) x 100.

FOR RESEARCH USE ONLY. NOT FOR DIAGNOSTIC OR THERAPEUTIC USE.