

## *Certificate of Analysis*

<b>Cell count</b>	61.5 million per vial
<b>Viability</b>	91%
<b>CD3+</b>	61.2%
<b>CD19+</b>	13.0%
<b>CD14+</b>	18.2%
<b>CD11c+</b>	24.7%
<b>CD16+</b>	4.9%
<b>CD56+</b>	13.5%
<b>Sterility</b>	Negative for Bacteria, Yeast, and Fungi

### *Donor Information*

<b>Donor ID</b>	222
<b>Age</b>	33
<b>Ethnicity</b>	Caucasian
<b>Gender</b>	Female
<b>Height</b>	5' 10"
<b>Weight</b>	295 lbs
<b>ABO Type</b>	O negative

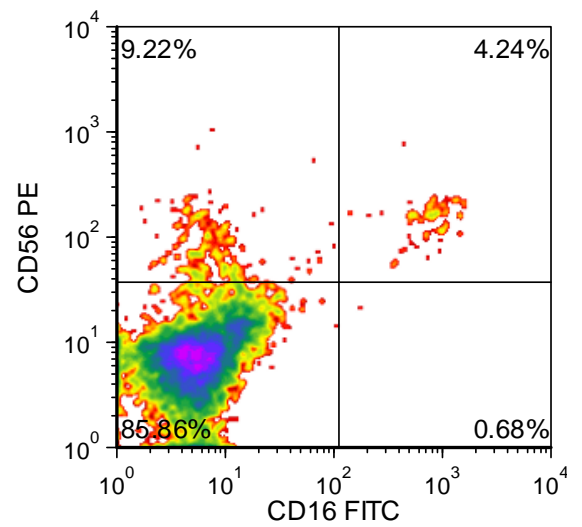
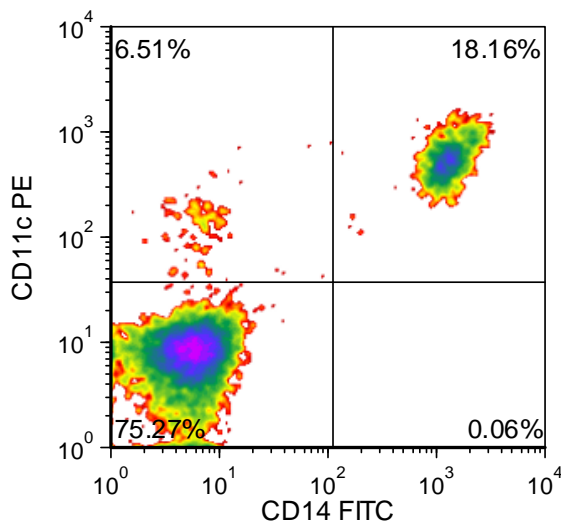
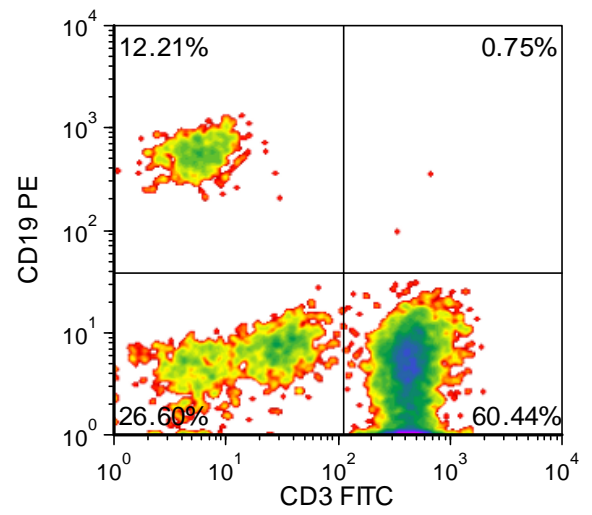
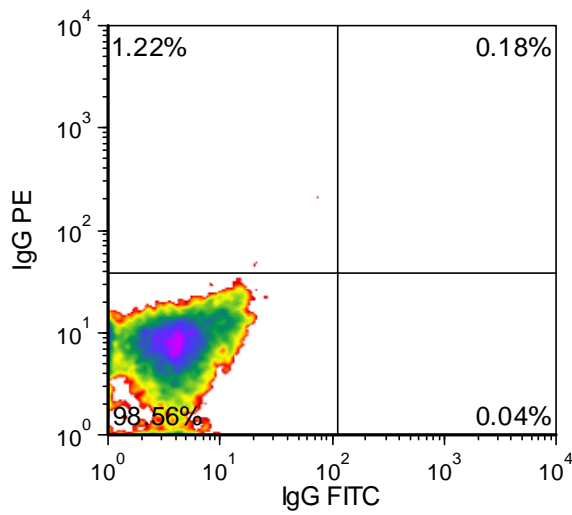
### *HLA typing*

	<b>Allele 1</b>	<b>Allele 2</b>
<b>HLA-A</b>	02:01	02:01
<b>HLA-B</b>	15	27:05
<b>HLA-C</b>	02	03
<b>HLA-DRB1</b>	07:01	04:01

**Note:** This donor is healthy and takes no medication. She is allergic to tree pollens and keflex. Her genotype at Fc gamma RIIIa is F/V.

Donors are tested for the blood borne pathogens HIV-1 and 2, Hepatitis B, Hepatitis C and HTLV-1 and are negative. Cells should still be handled as if potentially infectious following biosafety level 2 procedures

**FOR RESEARCH USE ONLY. NOT FOR DIAGNOSTIC OR THERAPEUTIC USE**



**FOR RESEARCH USE ONLY. NOT FOR DIAGNOSTIC OR THERAPEUTIC USE**

***Lot Specific Recall Antigen Response***

	<b>Interferon gamma</b>	<b>TNF alpha</b>
<b>Media Control</b>	<b>3</b>	<b>1</b>
<b>Tetanus Toxoid</b>	50059	178
<b>PHA</b>	365373	625
<b>LPS</b>	94080	1103
<b>Cytomegalovirus</b>	14	0

Values are pg/mL of culture medium collected 4 days after stimulation with antigen or mitogen