

Certificate of Analysis

Cell Count	1.7 Million per vial
Viability	94%
CD8+	98.15%
CD8+ Neg Tetramer+	1.47%
CD8+ CMV Tetramer+	45.96%
Sterility Testing	Negative for bacteria and fungi

Donor Information

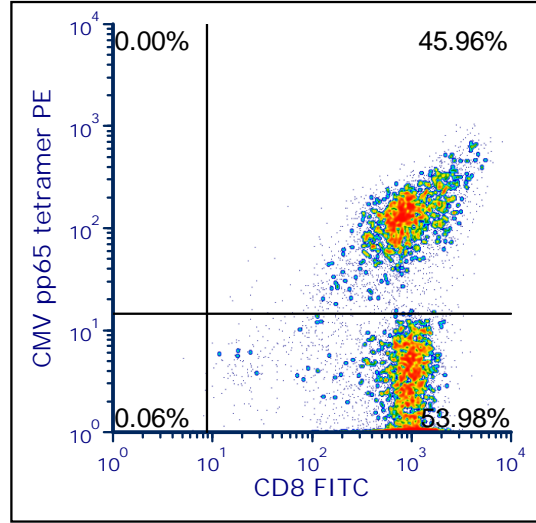
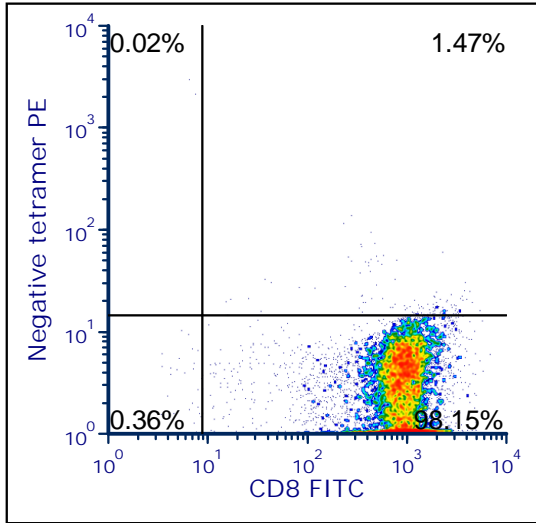
Donor ID	401
Gender	Female
Age	31
Race	Caucasian
Height	63 in.
Weight	277 lbs.
ABO Type	A negative

HLA Typing

	Allele 1	Allele 2
HLA-A	0201	0201
HLA-B	1801	4001
HLA-C	0304	0701
HLA-DRB1	0801	1201

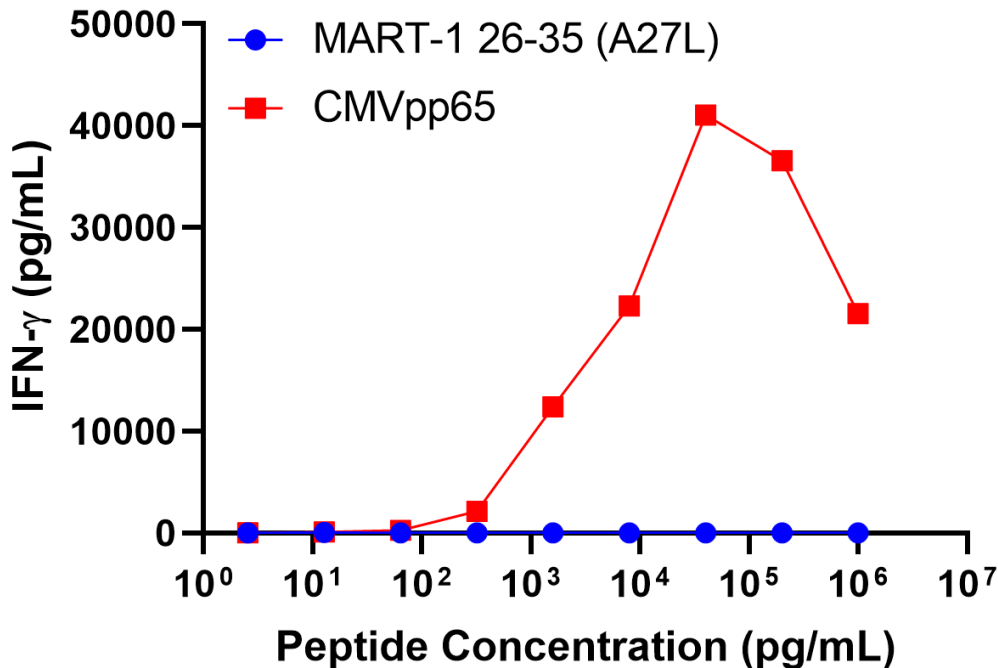
Donors are tested for the blood borne pathogens HIV-1 and 2, Hepatitis B, Hepatitis C and HTLV-1 and are negative. Cells should still be handled as if potentially infectious following biosafety level 2 procedures.

FOR RESEARCH USE ONLY. NOT FOR DIAGNOSTIC OR THERAPEUTIC USE.



Negative tetramer = HLA-A*0201-PE iTag MHC Tetramer (MBL International, Woburn, MA); CMV A2 tetramer = CMV pp65 peptide (NLVPMVATV)/ HLA-A*0201-PE iTag MHC Tetramer (MBL International, Woburn, MA)

IFN-gamma Secretion



20,000 T cells were plated in a 96-well round-bottom plate alone or in the presence of 20,000 T2 cells, a B-LCL expressing HLA-A*0201) alone or in the presence of increasing concentrations HLA-A*0201 restricted native MART-127-35 nonamer peptide (AAGIGILTV), analog (A27L) MART-126-35 decamer peptide (ELAGIGILTV) or HLA-A*0201 restricted HPV E711-20 (YMLDLQPETT). Culture media used is RPMI 1640 + 10% FBS. Supernatants were collected after 18-24 hours or incubation. IFN-γ concentration was analyzed using the Meso Scale Discovery IFN-γ assay.

FOR RESEARCH USE ONLY. NOT FOR DIAGNOSTIC OR THERAPEUTIC USE.