

## **Certificate of Analysis**

<b>Cell count</b>	121 million per vial
<b>Viability</b>	93%
<b>CD3+</b>	65.9%
<b>CD19+</b>	6.7%
<b>CD14+</b>	7.6%
<b>CD11c+</b>	13.2%
<b>CD16+</b>	10.0%
<b>CD56+</b>	13.4%
<b>Sterility</b>	Negative for Bacteria, Yeast, and Fungi

### ***Donor Information***

<b>Donor ID</b>	610
<b>Age</b>	40
<b>Race</b>	Caucasian
<b>Gender</b>	Male
<b>Height</b>	70 inches
<b>Weight</b>	197 lbs
<b>ABO Type</b>	A Positive

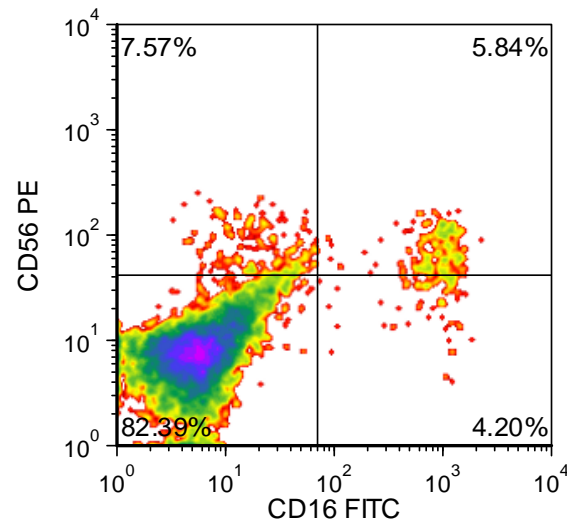
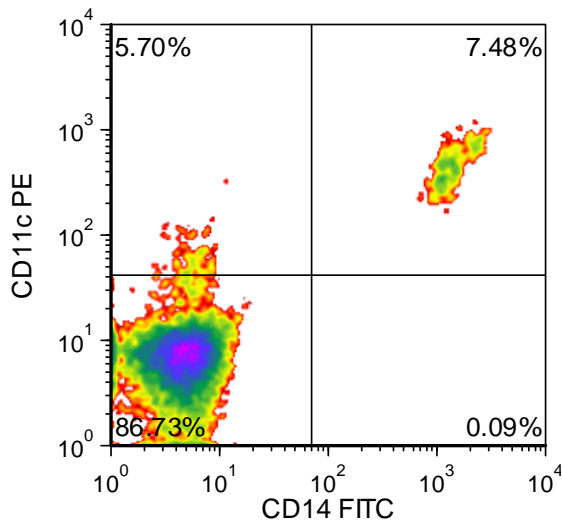
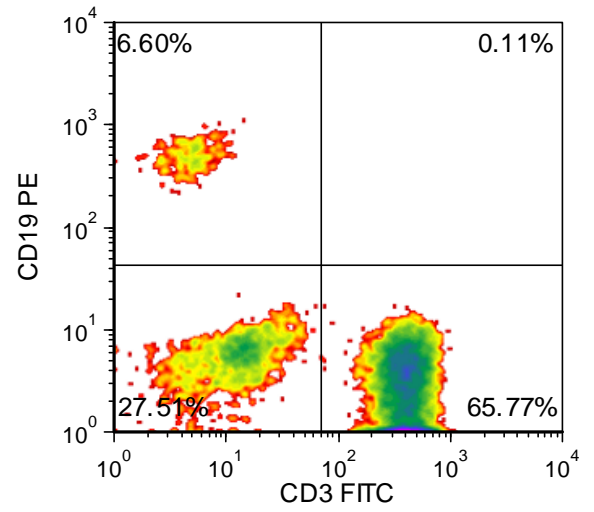
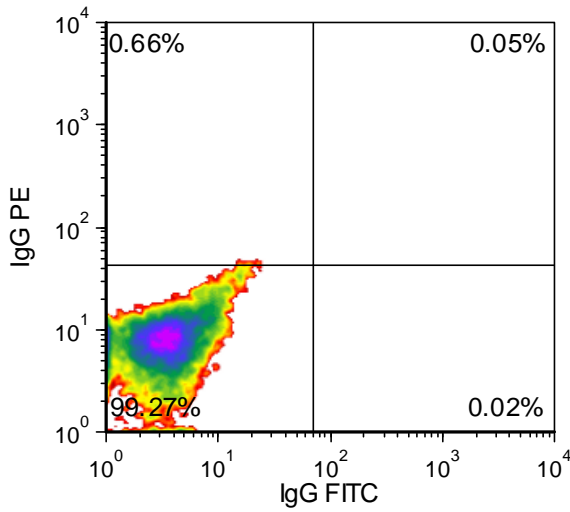
### ***HLA typing***

	<b>Allele 1</b>	<b>Allele 2</b>
<b>HLA-A</b>	01:01	03:01
<b>HLA-B</b>	08:01	35:01
<b>HLA-C</b>	04:01	07:01
<b>HLA-DRB1</b>	01:01	03:01

**Note: Medications: Novolog insulin**

Donors are tested for the blood borne pathogens HIV-1 and 2, Hepatitis B, Hepatitis C and HTLV-1 and are negative. Cells should still be handled as if potentially infectious following biosafety level 2 procedures

**FOR RESEARCH USE ONLY. NOT FOR DIAGNOSTIC OR THERAPEUTIC USE**



FOR RESEARCH USE ONLY. NOT FOR DIAGNOSTIC OR THERAPEUTIC USE

***Lot Specific Recall Antigen Response***

	<b>Interferon gamma</b>	<b>TNF alpha</b>
<b>Media Control</b>	1	1
<b>Tetanus Toxoid</b>	4	2
<b>PHA</b>	375699	371
<b>LPS</b>	4292	222
<b>Cytomegalovirus</b>	14	1

Values are pg/mL of culture medium collected 4 days after stimulation with antigen or mitogen