

Certificate of Analysis

Cell Count	0.9 Million per vial
Viability	95%
CD8+	95.98%
CD8+ Neg Tetramer+	1.11%
CD8+ MART-1 Tetramer+	93.73%
Sterility Testing	Negative for bacteria and fungi

Donor Information

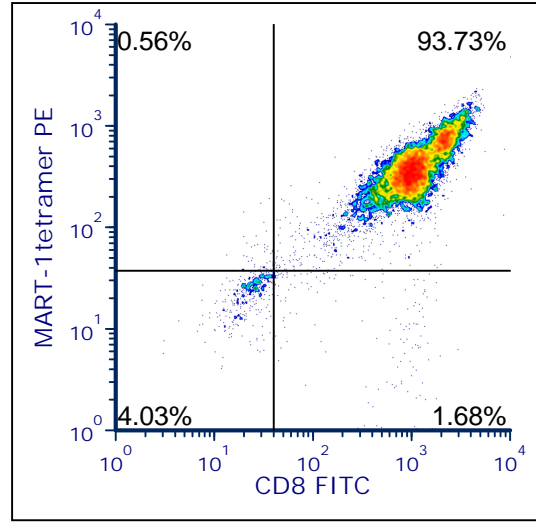
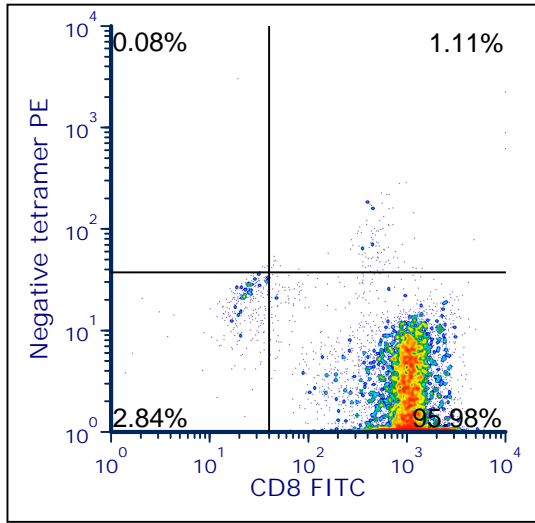
Donor ID	358
Gender	Female
Age	54
Race	Caucasian
Height	5'6"
Weight	230
ABO Type	O negative

HLA Typing

	Allele 1	Allele 2
HLA-A	0201	0201
HLA-B	4402	1501
HLA-C	0303	0501
HLA-DRB1	0103	0404

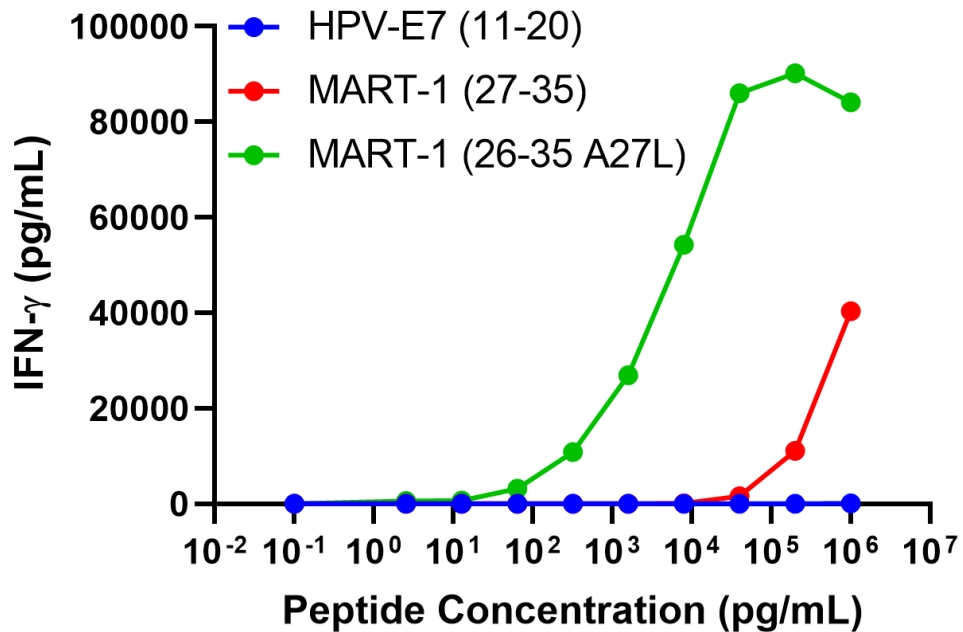
Donors are tested for the blood borne pathogens HIV-1 and 2, Hepatitis B, Hepatitis C and HTLV-1 and are negative. Cells should still be handled as if potentially infectious following biosafety level 2 procedures.

FOR RESEARCH USE ONLY. NOT FOR DIAGNOSTIC OR THERAPEUTIC USE.



Negative tetramer = HLA-A*0201-PE iTag MHC Tetramer (MBL International, Woburn, MA); MART-1 tetramer = MART-126-35 A27L peptide (ELAGIGILTV)/ HLA-A*0201-PE iTag MHC Tetramer (MBL International, Woburn, MA)

IFN-gamma Secretion



20,000 T cells were plated in a 96-well round-bottom plate alone or in the presence of 10,000 T2 cells, a B-LCL expressing HLA-A*0201) alone or in the presence of increasing concentrations HLA-A*0201 restricted native MART-127-35 nonamer peptide (AAGIGILTV), analog (A27L) MART-126-35 decamer peptide (ELAGIGILTV) or HLA-A*0201 restricted HPV E711-20 (YMLDLQPETT). Culture media used is RPMI 1640 + 10% FBS. Supernatants were collected after 18-24 hours of incubation. IFN- γ concentration was analyzed using the Meso Scale Discovery IFN- γ assay.

FOR RESEARCH USE ONLY. NOT FOR DIAGNOSTIC OR THERAPEUTIC USE.