

Certificate of Analysis

Cell Count	>2 Million per vial
Viability	91%
CD8+	94.39%
CD8+ Neg Tetramer+	3.36%
CD8+ HER2/neu Tetramer+	47.43%
Sterility Testing	Negative for bacteria and fungi

Donor Information

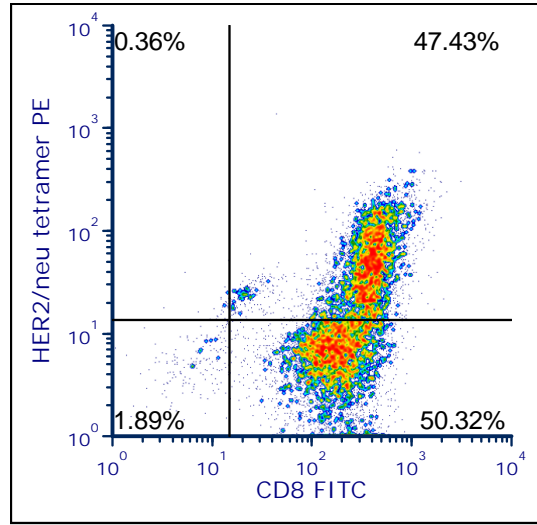
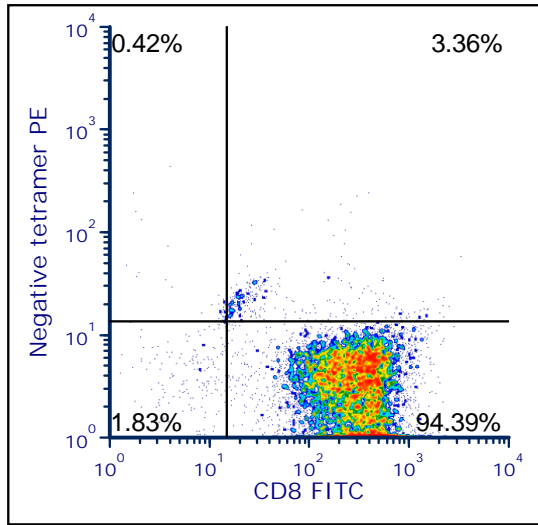
Donor ID	396
Gender	Male
Age	48
Race	Caucasian
Height	71 in
Weight	245 lbs
ABO Type	A positive

HLA Typing

	Allele 1	Allele 2
HLA-A	02:01	24:02
HLA-B	07:02	15:01
HLA-C	03:03	05:01
HLA-DRB1	04:01	13:01

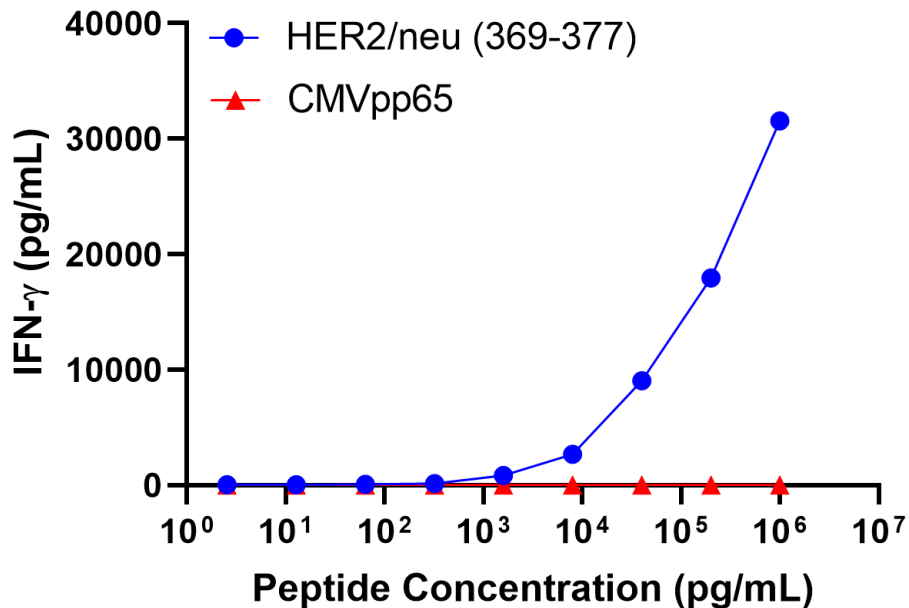
Donors are tested for the blood borne pathogens HIV-1 and 2, Hepatitis B, Hepatitis C and HTLV-1 and are negative. Cells should still be handled as if potentially infectious following biosafety level 2 procedures.

FOR RESEARCH USE ONLY. NOT FOR DIAGNOSTIC OR THERAPEUTIC USE.



Negative tetramer = HLA-A*0201-PE iTag MHC Tetramer (MBL International, Woburn, MA); HER2/neu tetramer = HER2/neu E75 peptide (KIFGSLAFL)/ HLA-A*0201-PE iTag MHC Tetramer (MBL International, Woburn, MA)

IFN-gamma Secretion



20,000 T cells were plated in a 96-well round-bottom plate alone or in the presence of 20,000 T2 cells, a B-LCL expressing HLA-A*0201) alone or in the presence of increasing concentrations HLA-A*0201 restricted CMVpp65 peptide (NLVPMVATV) or HLA-A*0201 restricted HER2/neu₃₆₉₋₃₇₇ (KIFGSLAFL). Culture media used is RPMI 1640 + 10% FBS. Supernatants were collected after 18-24 hours of incubation. IFN- γ concentration was analyzed using the Meso Scale Discovery IFN- γ assay.

FOR RESEARCH USE ONLY. NOT FOR DIAGNOSTIC OR THERAPEUTIC USE.