

## Certificate of Analysis

<b>Cell count</b>	9.2 million per vial
<b>Viability</b>	93%
<b>CD3+</b>	0.9%
<b>CD19+</b>	0.2%
<b>CD14+</b>	90.6%
<b>CD11c+</b>	93.7%
<b>CD16+</b>	17.9%
<b>CD56+</b>	2.3%
<b>Sterility</b>	Negative for Bacteria, Yeast, and Fungi

### *Donor Information*

<b>Donor ID</b>	514
<b>Age</b>	24
<b>Race</b>	Caucasian
<b>Gender</b>	Female
<b>Height</b>	62 inches
<b>Weight</b>	146 lbs
<b>ABO Type</b>	O Positive

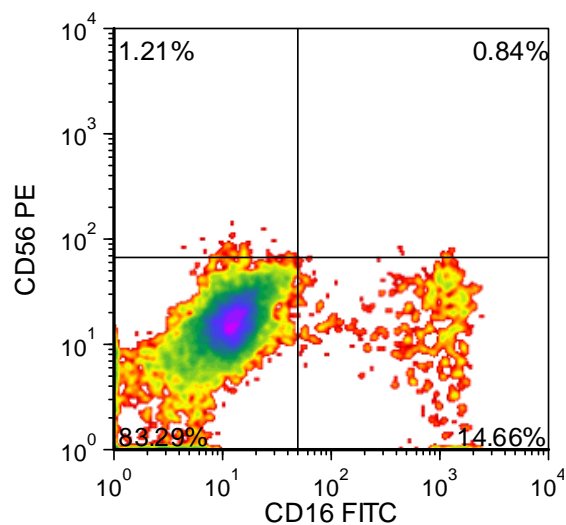
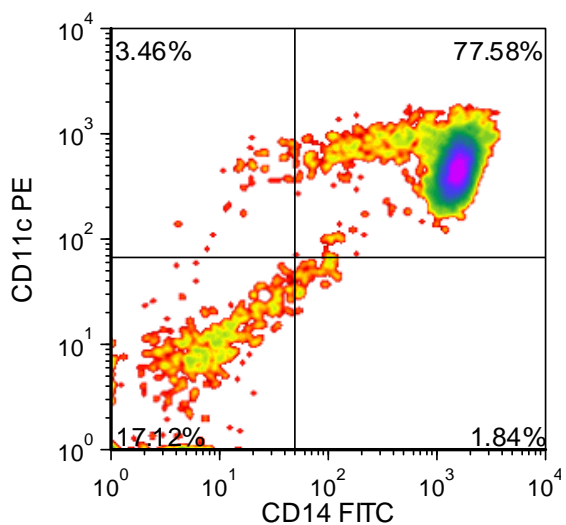
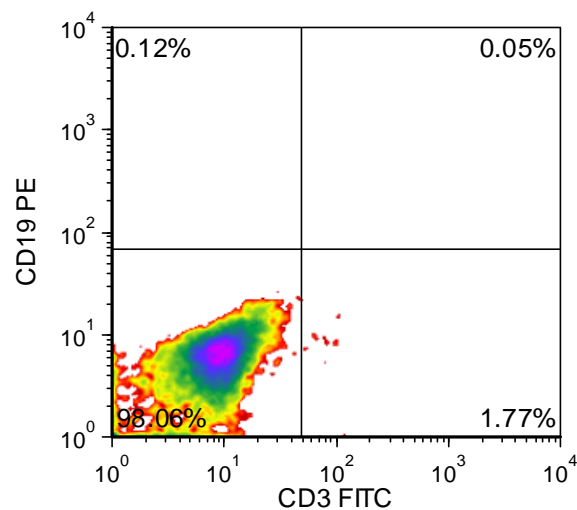
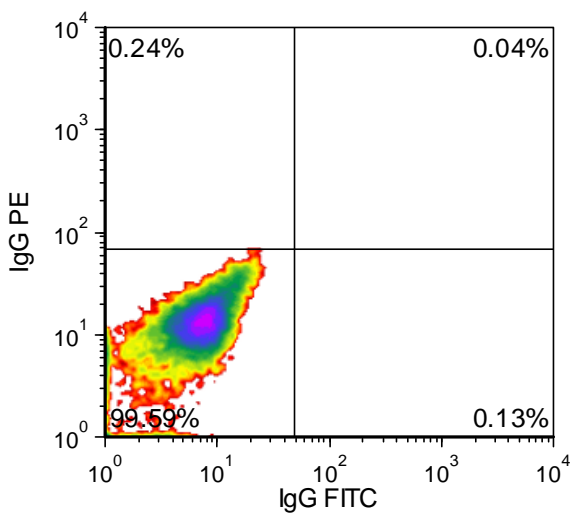
### *HLA typing*

	<b>Allele 1</b>	<b>Allele 2</b>
<b>HLA-A</b>	24:02	68:02
<b>HLA-B</b>	14:02	15:18
<b>HLA-C</b>	07:04	08:02
<b>HLA-DRB1</b>	11:01	13:03

**Note:**

Donors are tested for the blood borne pathogens HIV-1 and 2, Hepatitis B, Hepatitis C and HTLV-1 and are negative. Cells should still be handled as if potentially infectious following biosafety level 2 procedures.

**FOR RESEARCH USE ONLY. NOT FOR DIAGNOSTIC OR THERAPEUTIC USE**



**FOR RESEARCH USE ONLY. NOT FOR DIAGNOSTIC OR THERAPEUTIC USE**