

## *Certificate of Analysis*

<b>Cell Count</b>	2.0 Million per vial
<b>Viability</b>	91%
<b>CD4+</b>	99.37%
<b>CD4+ CD25+</b>	90.32%
<b>CD25+ CD127-</b>	89.84%
<b>% Suppression at 1:8 Treg:Effector Ratio</b>	56%
<b>Sterility Testing</b>	Negative for bacteria and fungi

## *Donor Information*

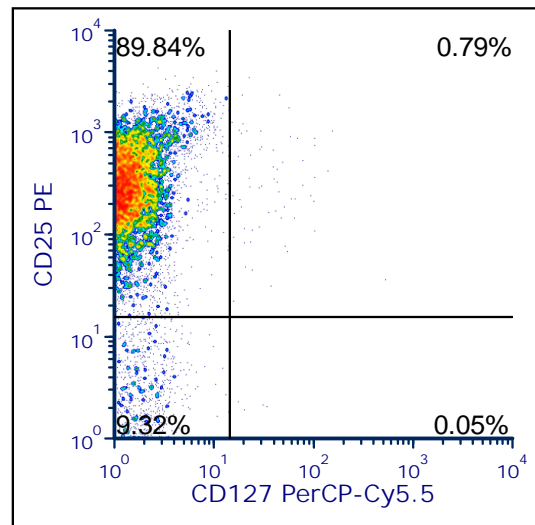
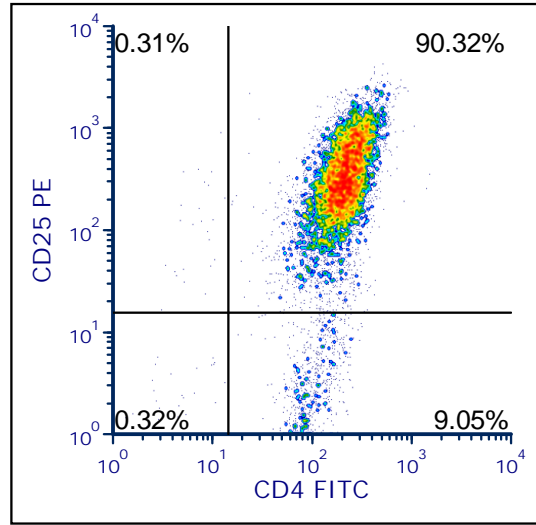
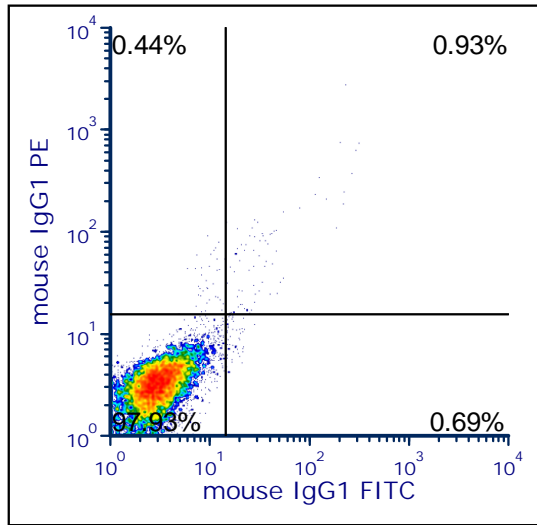
<b>Donor ID</b>	363
<b>Gender</b>	Female
<b>Age</b>	69
<b>Race</b>	Caucasian
<b>Height</b>	5'5"
<b>Weight</b>	128
<b>ABO Type</b>	O positive

## *HLA Typing*

	<b>Allele 1</b>	<b>Allele 2</b>
<b>HLA-A</b>	02:01	24:02
<b>HLA-B</b>	15	35
<b>HLA-C</b>	03	04
<b>HLA-DRB1</b>	01:03	01:03

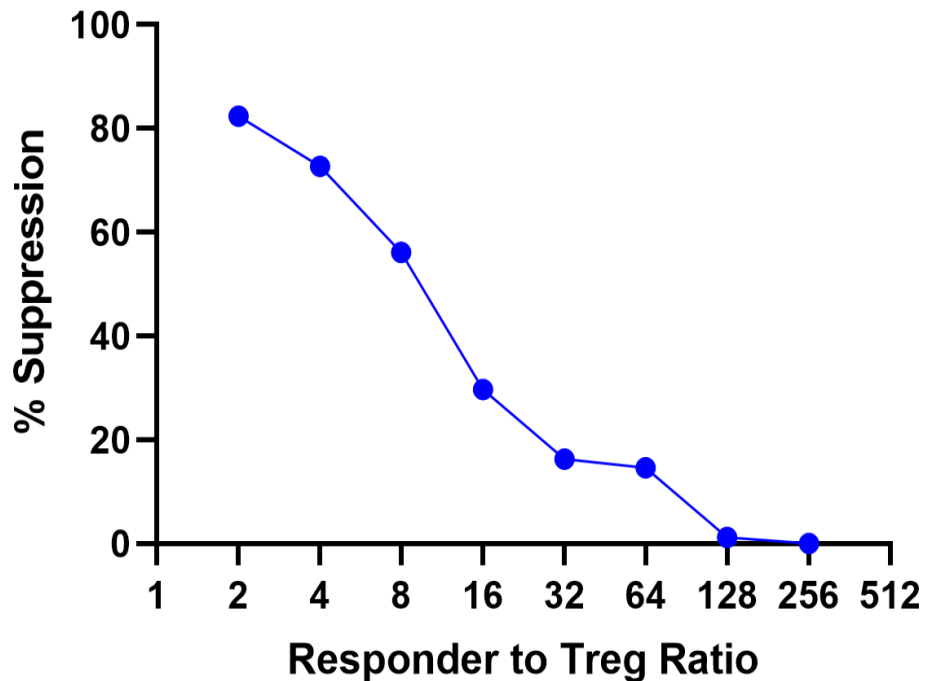
Donors are tested for the blood borne pathogens HIV-1 and 2, Hepatitis B, Hepatitis C and HTLV-1 and are negative. Cells should still be handled as if potentially infectious following biosafety level 2 procedures.

**FOR RESEARCH USE ONLY. NOT FOR DIAGNOSTIC OR THERAPEUTIC USE.**



**FOR RESEARCH USE ONLY. NOT FOR DIAGNOSTIC OR THERAPEUTIC USE.**

## 5151JN21



**Co-Culture of Tregs Resulted in Suppression of Anti- CD3-mediated CD8+ T Cell Proliferation of Allogeneic Peripheral Blood Mononuclear Cells (PBMCs).**

In short, in a 96 well plate, 250,000 CFSE-labelled allogeneic responder PBMC were plated/well in the presence of 0.2 µg/mL anti-CD3 and varying number of Tregs at responder to Treg ratio shown in the chart above. The plate was incubated in a 37 deg C, 6% CO<sub>2</sub> incubator. After 5 days of culture, individual wells were harvested and labelled with PE-labelled anti-CD8 mAb. Data was acquired on a flow cytometer and the extent of proliferation (Division Index, DI) was analyzed using FCS Express 4.0. % Suppression = 100- (DI in the presence of Treg/DI in the absence of Treg) x 100.

**FOR RESEARCH USE ONLY. NOT FOR DIAGNOSTIC OR THERAPEUTIC USE.**