

## *Certificate of Analysis*

Cell Count	1.8 Million per vial
Viability	95%
CD8+	96.85%
CD8+ Neg Tetramer+	0.45%
CD8+ M1 Tetramer+	46.00%
Sterility Testing	Negative for bacteria and fungi

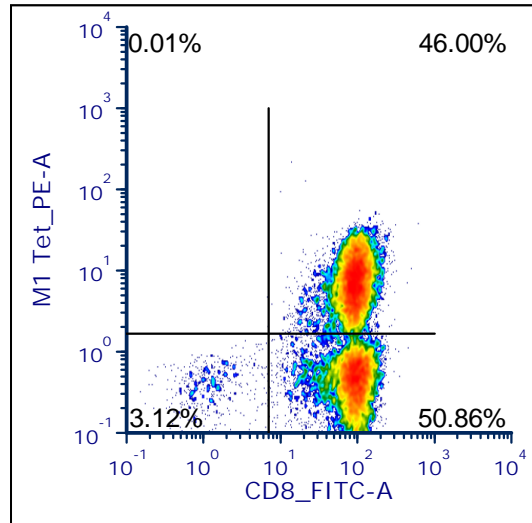
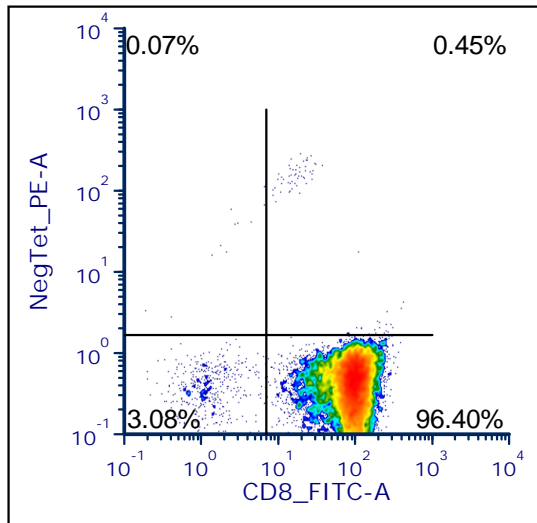
## *Donor Information*

Donor ID	401
Gender	Female
Age	31
Race	Caucasian
Height	63 in.
Weight	277 lbs.
ABO Type	A negative

## *HLA Typing*

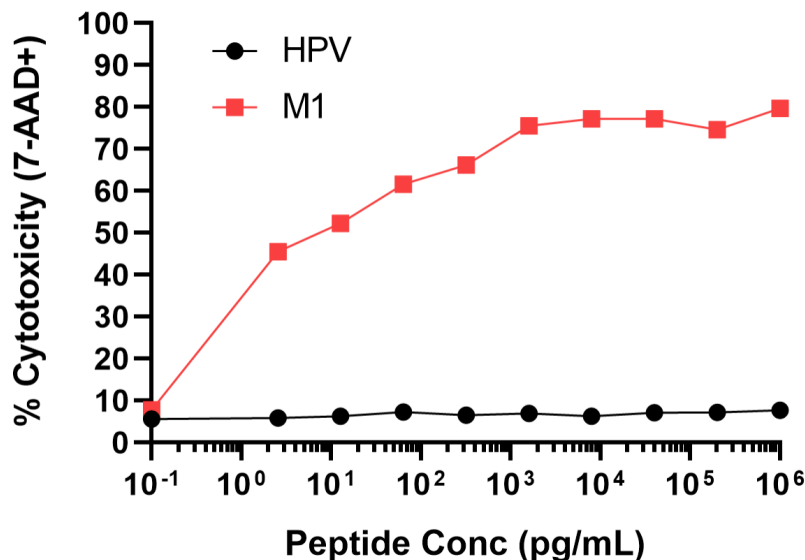
	<b>Allele 1</b>	<b>Allele 2</b>
HLA-A	02:01	02:01
HLA-B	18:01	40:01
HLA-C	03:04	07:01
HLA-DRB1	08:01	12:01

Donors are tested for the blood borne pathogens HIV-1 and 2, Hepatitis B, Hepatitis C and HTLV-1 and are negative. Cells should still be handled as if potentially infectious following biosafety level 2 procedures.



Negative tetramer = HLA-A\*0201-PE iTag MHC Tetramer (MBL International, Woburn, MA); M1/Flu tetramer = M1 peptide (GILGFVFTL)/ HLA-A\*0201-PE iTag MHC Tetramer (MBL International, Woburn, MA)

## Functional Assay (Cytotoxicity)



20,000 T cells were plated in a 96-well round-bottom plate alone or in the presence of 20,000 T2 cells, a B-LCL expressing HLA-A\*0201) alone or in the presence of increasing concentrations HLA-A\*0201 restricted M1 peptide (GILGFVFTL), or HLA-A\*0201 restricted HPV E7<sub>11-20</sub> (YMLDLQPETT). Culture media used is RPMI 1640 + 10% FBS. % dead target cells (T2) was analyzed on a flow cytometer using 7-AAD staining and presented against peptide concentration.