

Certificate of Analysis

Cell Count	1.78 Million per vial
Viability	96%
CD8+	94.17%
CD8+ Neg Tetramer+	0.39%
CD8+ E7 (11-20) Tetramer+	90.15%
Sterility Testing	Negative for Bacteria, Yeast, Fungi and Mycoplasma

Donor Information

Donor ID	224
Age	52
Gender	Female
Race	Caucasian
Height	5'3"
Weight	180
ABO Type	B negative

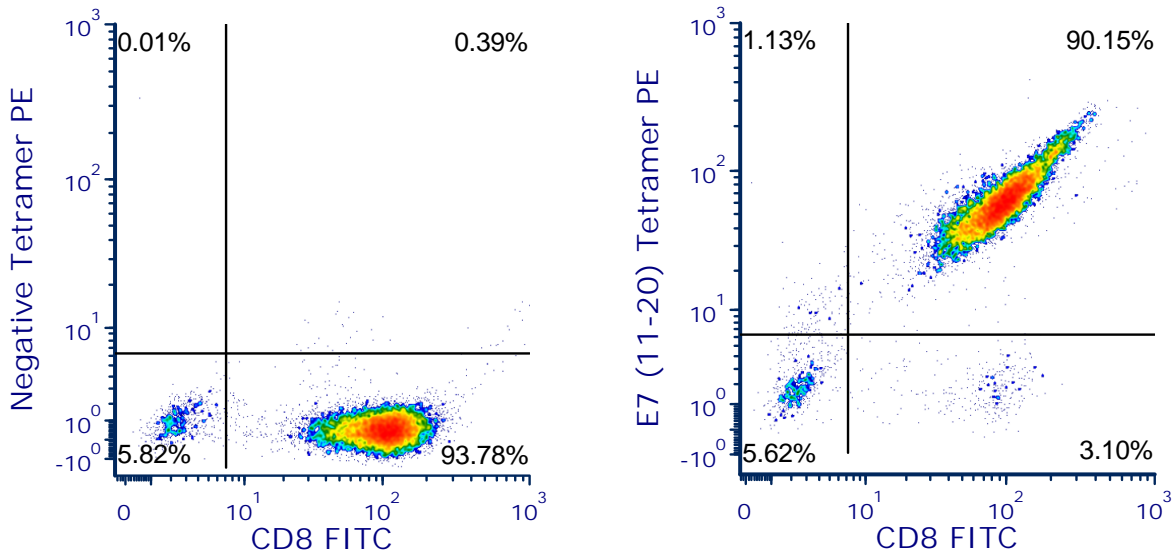
HLA Typing

	Allele 1	Allele 2
HLA-A	*0201	*0201
HLA-B	*07	*15
HLA-C	*03	*07
HLA-DRB1	*13	*15

Donors are tested for the blood borne pathogens HIV-1 and 2, Hepatitis B, Hepatitis C and HTLV-1 and are negative. Cells should still be handled as if potentially infectious following biosafety level 2 procedures.

FOR RESEARCH USE ONLY. NOT FOR DIAGNOSTIC OR THERAPEUTIC USE

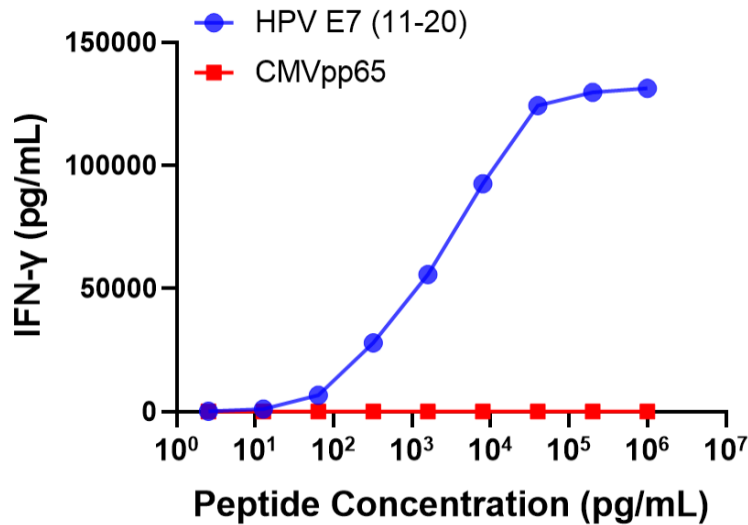
www.cellero.com - www.hemacare.com
techsupport@hemacare.com P: (425) 481-4180



E7(11-20) tetramer = HPV E7(11-20 peptide: YMLDLQPETT) HLA-A*0201-PE iTag MHC Tetramer (MBL International, Woburn, MA); Negative tetramer = HLA-A*0201-PE iTag MHC Tetramer (MBL International, Woburn, MA)

IFN-gamma Secretion

HPV E7 (11-20) Lot. 5173AU21



20,000 T cells were plated in a 96-well round-bottom plate alone or in the presence of 20,000 T2 cells, a B-LCL expressing HLA-A*0201) alone or in the presence of increasing concentrations HLA-A*0201 restricted CMVpp65₄₉₅₋₅₀₃ peptide (NLVPMVATV) or HLA-A*0201 restricted HPV/E7₁₁₋₂₀ peptide (YMLDLQPETT). Culture medium used in this assay is RPMI1640 + 10% FBS. After an overnight (18-24h) incubation period, supernatant was collected from each well. IFN-γ concentration was analyzed using the Meso Scale Discovery IFN-γ assay.

FOR RESEARCH USE ONLY. NOT FOR DIAGNOSTIC OR THERAPEUTIC USE

www.cellero.com - www.hemacare.com
 techsupport@hemacare.com P: (425) 481-4180