

Certificate of Analysis

Cell count	86 million per vial
Viability	97%
CD3+	43.6%
CD19+	5.9%
CD14+	27.7%
CD11c+	35.7%
CD16+	31.6%
CD56+	27.6%
Sterility	Negative for Bacteria, Yeast, and Fungi

Donor Information

Donor ID	398
Age	44
Race	Caucasian
Gender	Female
Height	66 inches
Weight	142 lbs
ABO Type	A Positive

HLA typing

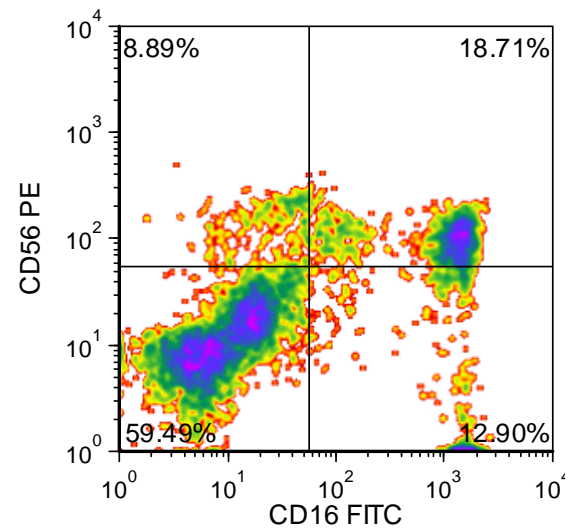
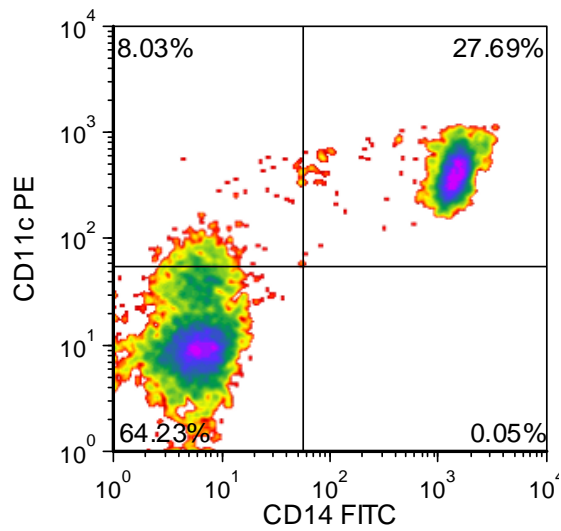
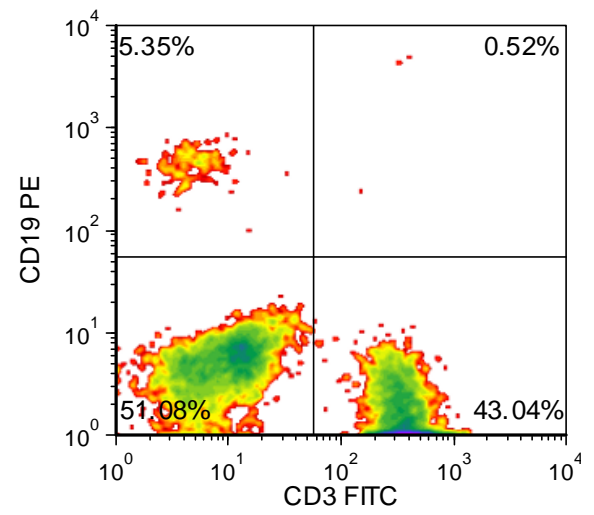
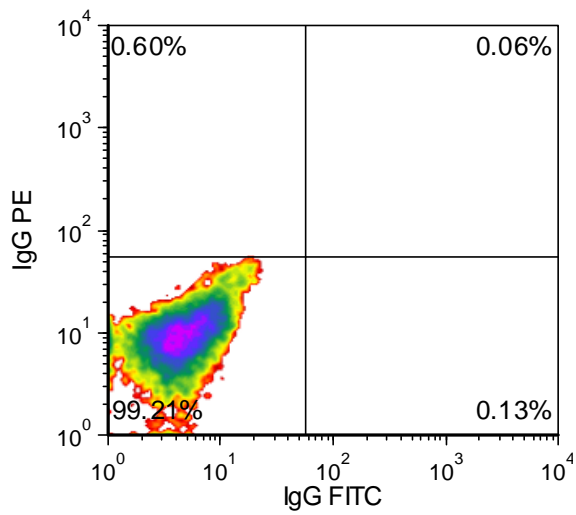
	Allele 1	Allele 2
HLA-A	02:01	03:01
HLA-B	07:02	39:01
HLA-C	07:02	07:02
HLA-DRB1	08:01	15:01

Note: Donor has an allergy to kidney beans and seasonal allergies. She does not take any medications and does not smoke. She has the V/V genotype for FcγRIII alpha

Donors are tested for the blood borne pathogens HIV-1 and 2, Hepatitis B, Hepatitis C and HTLV-1 and are negative. Cells should still be handled as if potentially infectious following biosafety level 2 procedures

FOR RESEARCH USE ONLY. NOT FOR DIAGNOSTIC OR THERAPEUTIC USE

www.cellero.com - www.hemacare.com
techsupport@hemacare.com P: (425) 481-4180



FOR RESEARCH USE ONLY. NOT FOR DIAGNOSTIC OR THERAPEUTIC USE

www.cellero.com - www.hemacare.com
 techsupport@hemacare.com P: (425) 481-4180

Lot Specific Recall Antigen Response

	Interferon gamma	TNF alpha
Media Control	2	1
Tetanus Toxoid	20348	31
PHA	1169401	4606
LPS	53016	1294
Cytomegalovirus	172	4

Values are pg/mL of culture medium collected 4 days after stimulation with antigen or mitogen