

## **Certificate of Analysis**

<b>Cell Count</b>	2.0 Million per vial
<b>Viability</b>	91%
<b>CD8+</b>	95.20%
<b>CD8+ Neg Tetramer+</b>	0.15%
<b>CD8+ MART-1 Tetramer+</b>	92.13%
<b>Sterility Testing</b>	Negative for bacteria and fungi

## **Donor Information**

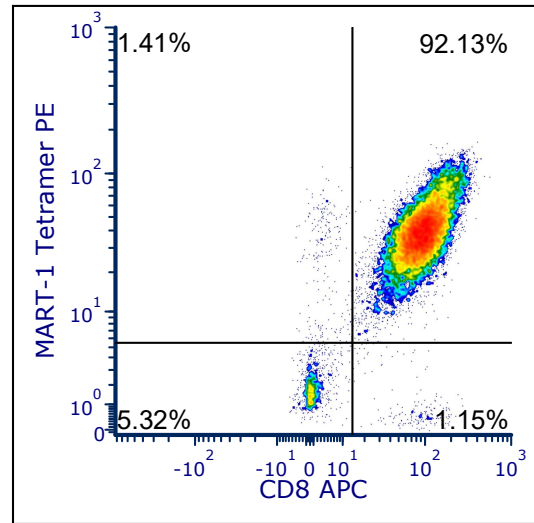
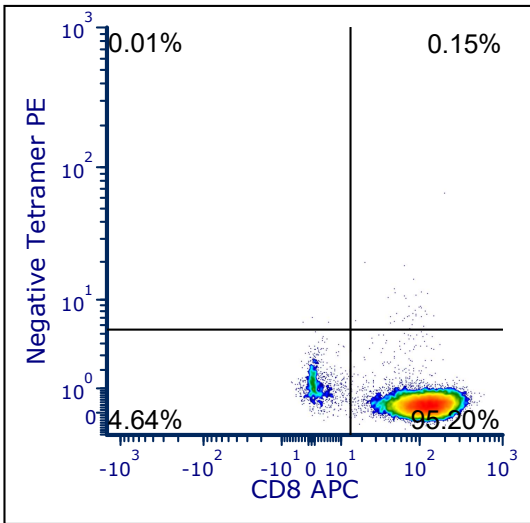
<b>Donor ID</b>	358
<b>Gender</b>	Female
<b>Age</b>	54
<b>Race</b>	Caucasian
<b>Height</b>	66 in
<b>Weight</b>	230 lbs
<b>ABO Type</b>	O negative

## **HLA Typing**

	<b>Allele 1</b>	<b>Allele 2</b>
<b>HLA-A</b>	02:01	02:01
<b>HLA-B</b>	44:02	15:01
<b>HLA-C</b>	03:03	05:01
<b>HLA-DRB1</b>	01:03	04:04

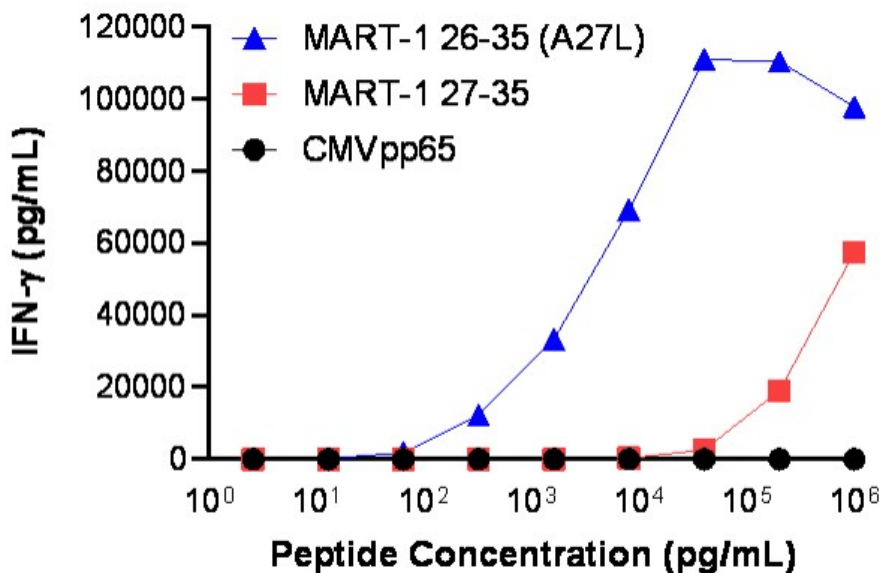
Donors are tested for the bloodborne pathogens (HIV-1 and 2, Hepatitis B, Hepatitis C and HTLV-1) and are negative. Cells should still be handled as if potentially infectious following biosafety level 2 procedures.

**FOR RESEARCH USE ONLY. NOT FOR DIAGNOSTIC OR THERAPEUTIC USE.**



Negative tetramer: HLA-A\*02:01 - PE iTag MHC Tetramer (MBL International, Woburn, MA).  
 MART-1 tetramer: MART-126-35 A27L peptide (ELAGIGILTV)/HLA-A\*02:01 - PE iTag MHC Tetramer (MBL International, Woburn, MA)

## IFN-gamma Secretion



20,000 anti-MART-1 T cells were plated in a 96-well round-bottom plate with 20,000 T2 cells (a B-LCL expressing HLA-A\*02:01) alone or in the presence of increasing concentrations of HLA-A\*02:01 restricted native MART-1 27-35 nonamer peptide (AAGIGILTV), or HLA-A\*02:01 restricted analog (A27L) MART-1 26-35 decamer peptide (ELAGIGILTV) or HLA-A\*02:01 restricted CMVpp65 peptide (NLVPMVATV). Culture supernatants were collected after 18-24 hours of incubation. IFN- $\gamma$  concentration was analyzed using the Meso Scale Discovery and presented as pg/mL

**FOR RESEARCH USE ONLY. NOT FOR DIAGNOSTIC OR THERAPEUTIC USE.**