



Human SLE CD8+ T Cells, Negatively Selected
Catalog Number: 1059
Lot Number: 3276JY16

Certificate of Analysis

Cell count	10 million per vial
Viability	94%
CD3+	97.9%
CD4+	0.7%
CD8+	95.9%
CD19+	0.3%
CD14+	1.8%
CD11c+	2.1%
CD16+	0.0%
CD56+	0.0%
Sterility	Negative for Bacteria, Yeast, and Fungi

Donor Information

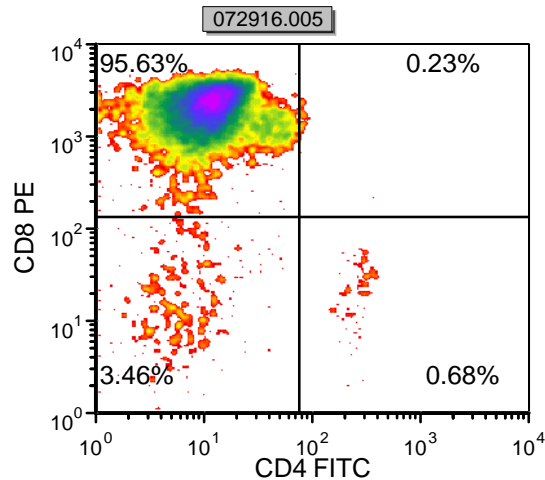
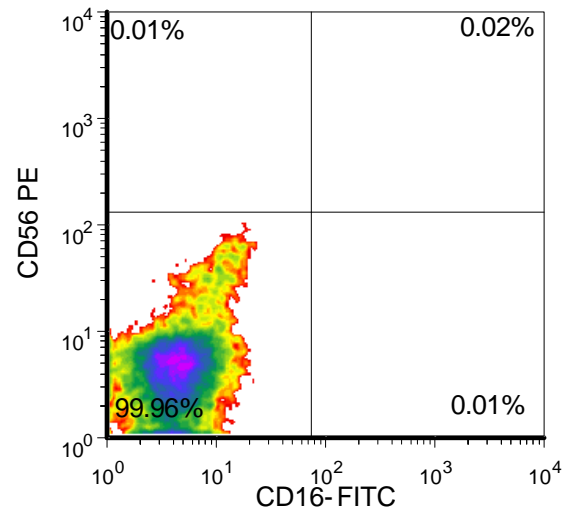
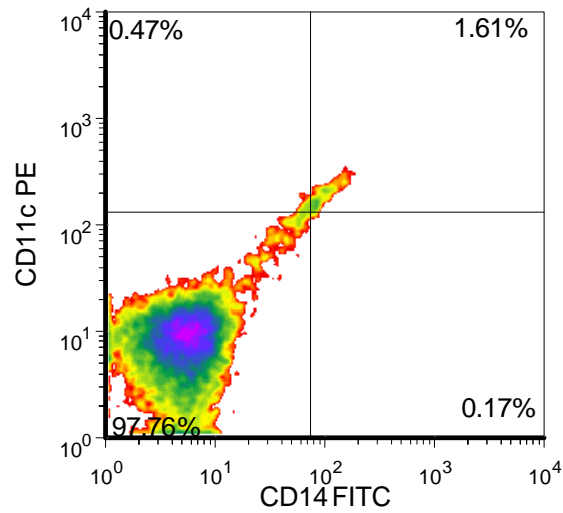
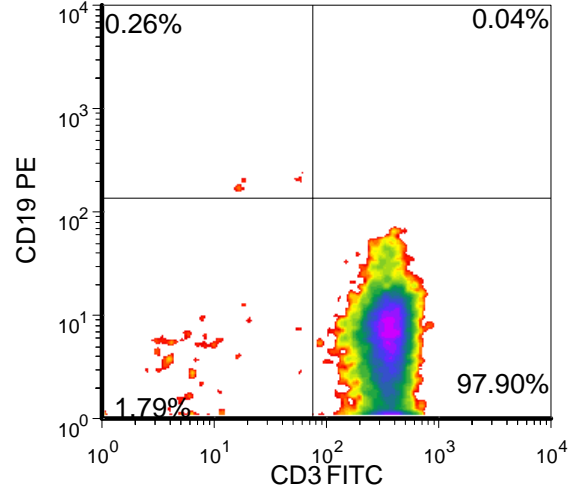
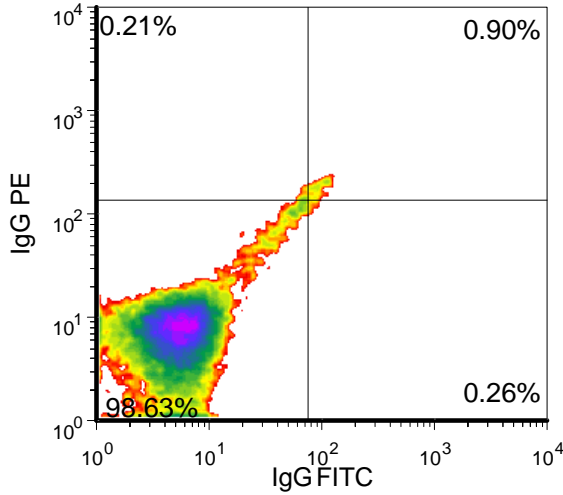
Donor ID	367
Age	57
Gender	Female
Race	Caucasian
Height	5' 9"
Weight	194 lbs.
ABO Type	Unknown

Current diagnosis stage: Moderate

Renal Involvement: No

Donors are tested for the blood borne pathogens HIV-1 and 2, Hepatitis B, Hepatitis C and HTLV-1 and are negative. Cells should still be handled as if potentially infectious following biosafety level 2 procedures

FOR RESEARCH USE ONLY. NOT FOR DIAGNOSTIC OR THERAPEUTIC USE



FOR RESEARCH USE ONLY. NOT FOR DIAGNOSTIC OR THERAPEUTIC USE



Human SLE CD8+ T Cells, Negatively Selected
Catalog Number: 1059
Lot Number: 3276JY16

Current Medications

Medications	Dosage
Effexor	25 mg
Rexulti	10 mg
Xanax	1 mg
Lortab	5/325
Methotrexate	2.5 mg
Plaquenil	200 mg

Autoantibodies

Antigen	Titer
ANA	1:640
dsDNA	14 EU
SSa	4.1 AI
SSb	1.3 AI

FOR RESEARCH USE ONLY. NOT FOR DIAGNOSTIC OR THERAPEUTIC USE