



Human SLE CD8+ T Cells, Negatively Selected
Catalog Number: 1059
Lot Number: 3340SE16

Certificate of Analysis

Cell count	7.8 million per vial
Viability	87%
CD3+	98.7%
CD4+	0.3%
CD8+	96.5%
CD19+	0.1%
CD14+	0.5%
CD11c+	1.2%
CD16+	0.1%
CD56+	0.4%
Sterility	Negative for Bacteria, Yeast, and Fungi

Donor Information

Donor ID	374
Age	43
Gender	Female
Race	Caucasian
Height	5' 2"
Weight	260 lbs.
ABO Type	NA

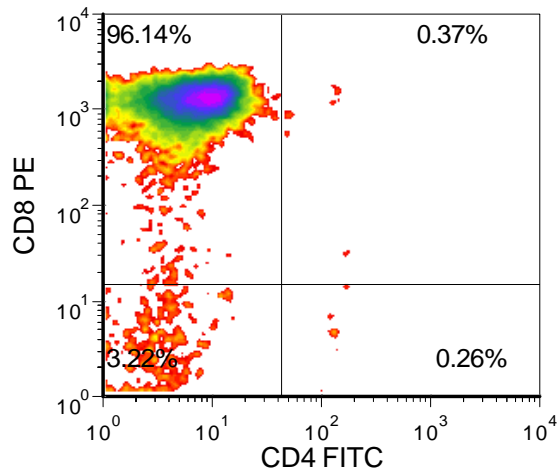
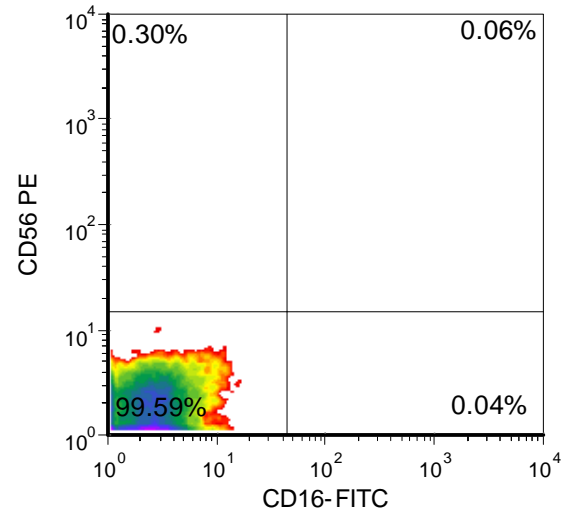
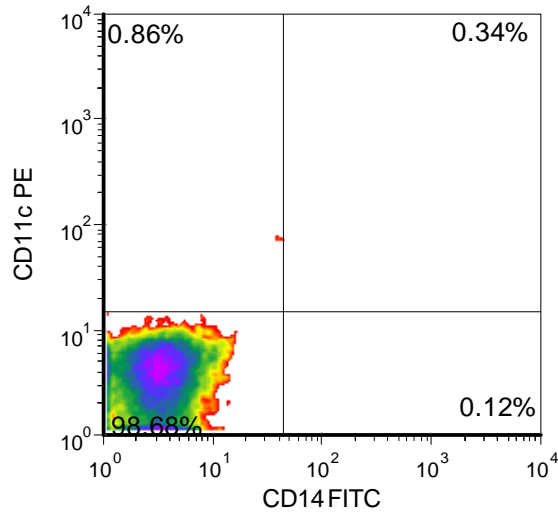
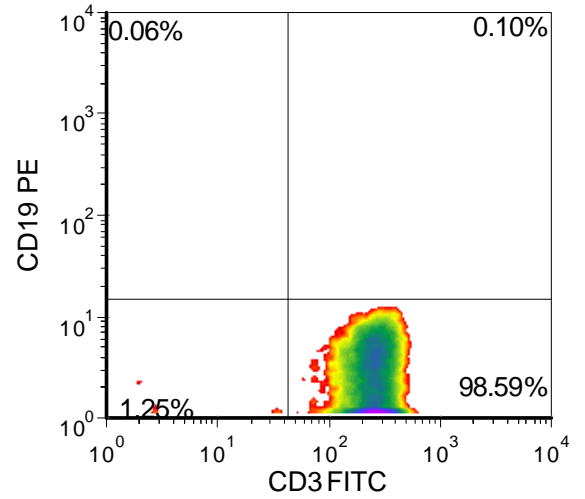
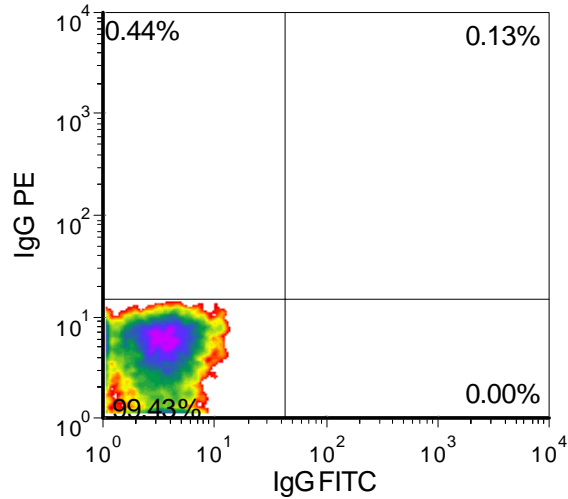
Note:

Current diagnosis stage: Moderate

Renal Involvement: No

Donors are tested for the blood borne pathogens HIV-1 and 2, Hepatitis B, Hepatitis C and HTLV-1 and are negative. Cells should still be handled as if potentially infectious following biosafety level 2 procedures

FOR RESEARCH USE ONLY. NOT FOR DIAGNOSTIC OR THERAPEUTIC USE



FOR RESEARCH USE ONLY. NOT FOR DIAGNOSTIC OR THERAPEUTIC USE



Human SLE CD8+ T Cells, Negatively Selected
Catalog Number: 1059
Lot Number: 3340SE16

Current Medications

Medications	Dosage
Humira	40 mg
Lantus	20 mg
Humalog	20 mg
Lasix	40 mg
Lotensin	20 mg
Levothyroxine	125 mcg
Prednisone	10 mg
Hydrocodone	5.0

Autoantibodies

Antibody	Level
ANA	1:640
dsDNA	2.7 IU/ml
SSa	11 AI

FOR RESEARCH USE ONLY. NOT FOR DIAGNOSTIC OR THERAPEUTIC USE