

Certificate of Analysis

Cell count	2 million per vial
Viability	92%
CD8+	99.0%
CD8+NegTetramer+	0.8%
CD8+CMVTetramer+	90.1%
Sterility	Negative for Bacteria, Yeast and Fungi

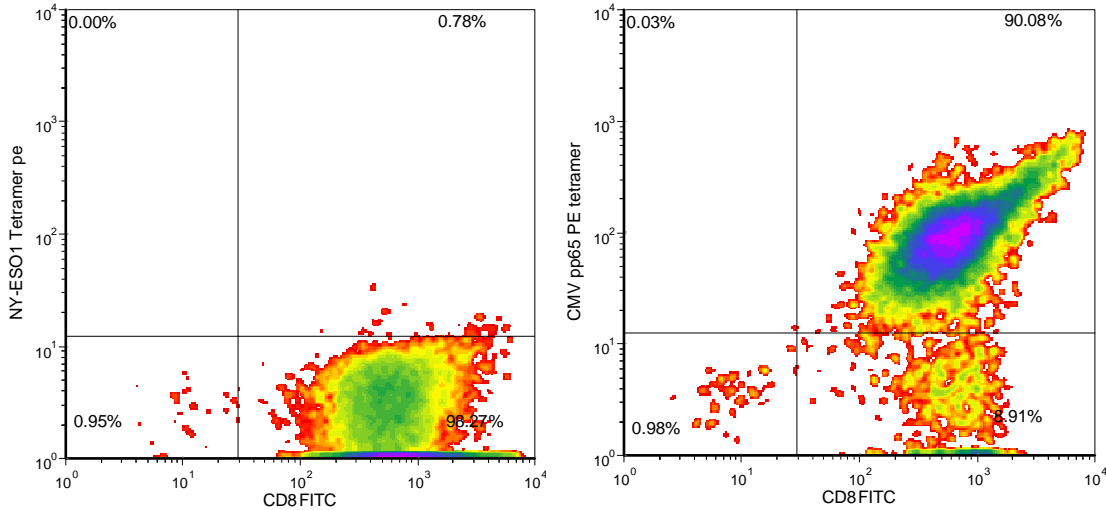
Donor Information

Donor ID	153
Age	29
Gender	Female
Race	Caucasian
Height	5'7"
Weight	205
ABO Type	O positive

HLA typing

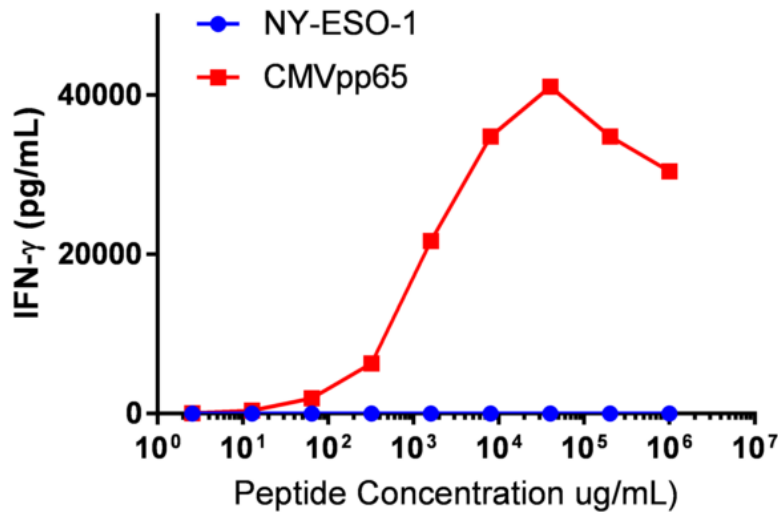
	Allele 1	Allele 2
HLA-A	*0201	*31
HLA-B	*15	*57
HLA-C	*03	*06
HLA-DRB1	*13	*15

Donors are tested for the blood borne pathogens HIV-1 and 2, Hepatitis B, Hepatitis C and HTLV-1 and are negative. Cells should still be handled as if potentially infectious following biosafety level 2 procedures



NY-ESO1 tetramer = NY-ESO-1 peptide (SLLMWITQV)/HLA-A*0201-PE iTag MHC Tetramer (MBL International, Woburn, MA);
 CMV pp65 tetramer = CMV pp65 peptide (NLVPMVATV)/HLA-A*0201-PE iTag MHC Tetramer (MBL International, Woburn, MA)

IFN-gamma Secretion



20,000 T cells were plated post-thaw in a 96-well round-bottom plate in the presence of 20,000 T2 cells, a B-LCL expressing HLA-A*0201) alone or in the presence of increasing concentrations of HLA-A*0201 restricted CMV pp65 peptide (NLVPMVATV) or HLA-A*0201 restricted NY-ESO-1 157-165 peptide (SLLMWITQV). After an overnight (18-24h) incubation period, supernatant was collected from each well. IFN-γ concentration was analyzed using the Meso Scale Discovery IFN-γ assay.