



CMV-Specific T Cells, Donor 153
Catalog Number: 1049
Lot Number: 4116NV18

Certificate of Analysis

Cell count	2 million per vial
Viability	91%
CD8+	99.4%
CD8+E7(11-20)Tetramer+	1.0%
CD8+CMVTetramer+	97.7%
Sterility	Negative for Bacteria, Yeast and Fungi

Donor Information

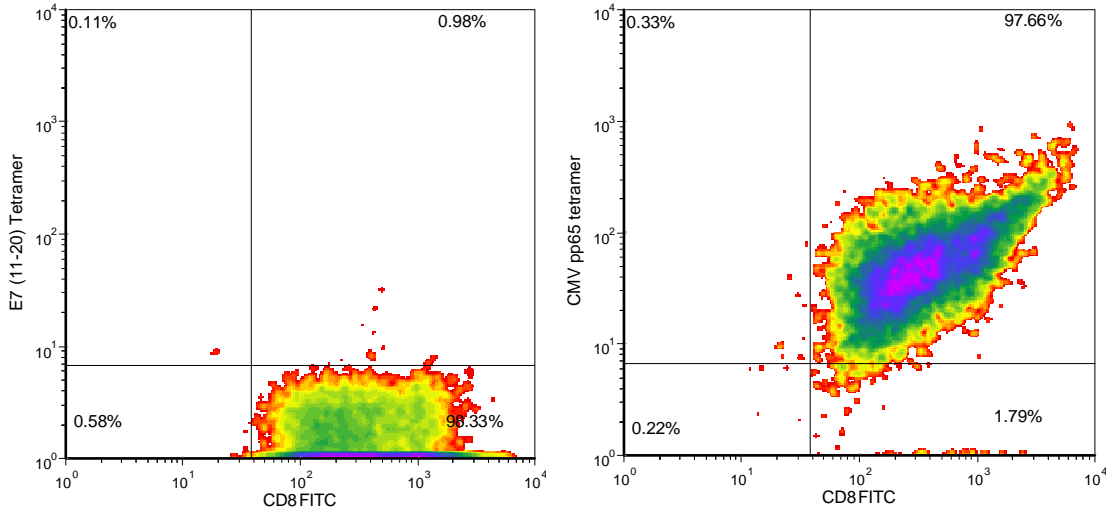
Donor ID	153
Age	29
Gender	Female
Race	Caucasian
Height	5'7"
Weight	205
ABO Type	O positive

HLA typing

	Allele 1	Allele 2
HLA-A	*0201	*31
HLA-B	*15	*57
HLA-C	*03	*06
HLA-DRB1	*13	*15

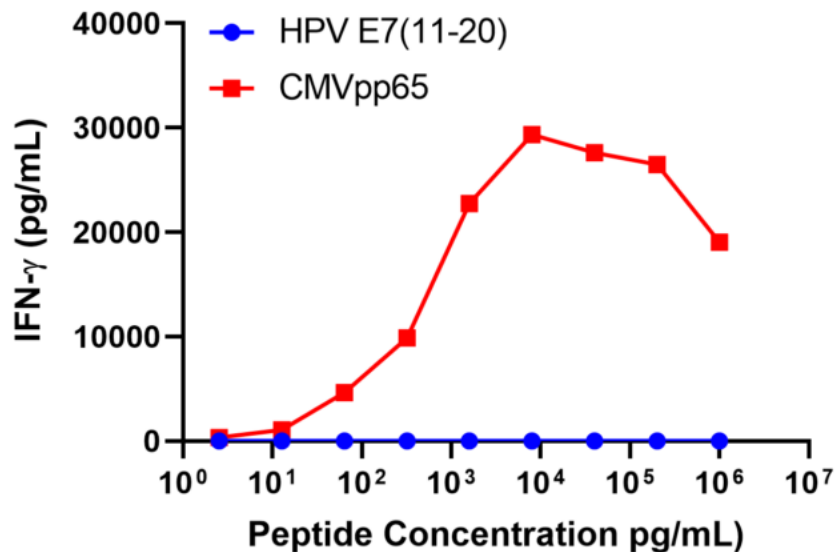
Donors are tested for the blood borne pathogens HIV-1 and 2, Hepatitis B, Hepatitis C and HTLV-1 and are negative. Cells should still be handled as if potentially infectious following biosafety level 2 procedures

FOR RESEARCH USE ONLY. NOT FOR DIAGNOSTIC OR THERAPEUTIC USE



E7(11-20) tetramer = HPV E7(11-20 peptide: YMLDLQPETT) HLA-A*0201-PE iTag MHC Tetramer (MBL International, Woburn, MA); CMV pp65 tetramer = CMV pp65 peptide (NLVPMVATV)/ HLA-A*0201-PE iTag MHC Tetramer (MBL International, Woburn, MA)

IFN-gamma Secretion



20,000 T cells were plated post-thaw in a 96-well round-bottom plate in the presence of 20,000 T2 cells, a B-LCL expressing HLA-A*0201) alone or in the presence of increasing concentrations OF HLA-A*0201 restricted CMV pp65 peptide (NLVPMVATV) or HLA-A*0201 restricted HPV/E7(11-20) peptide (YMLDLQPETT). After an overnight (18-24h) incubation period, supernatant was collected from each well. IFN- γ concentration was analyzed using the Meso Scale Discovery IFN- γ assay.

FOR RESEARCH USE ONLY. NOT FOR DIAGNOSTIC OR THERAPEUTIC USE