

Certificate of Analysis

Cell count	1.7 million per vial
Viability	90%
CD8+	99%
CD8+E711-20 Tetramer+	0.4%
CD8+MART-1 Tetramer+	96.5%
Sterility	Negative for Bacteria, Yeast, and Fungi

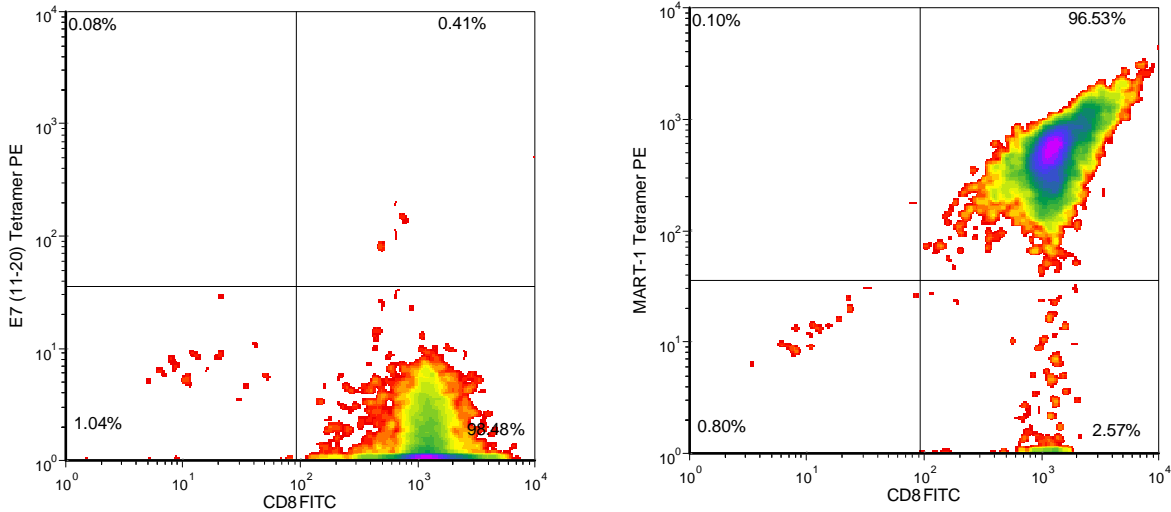
Donor Information

Donor ID	358
Age	52
Gender	Female
Race	Caucasian
Height	5'6"
Weight	230
ABO Type	O negative

HLA typing

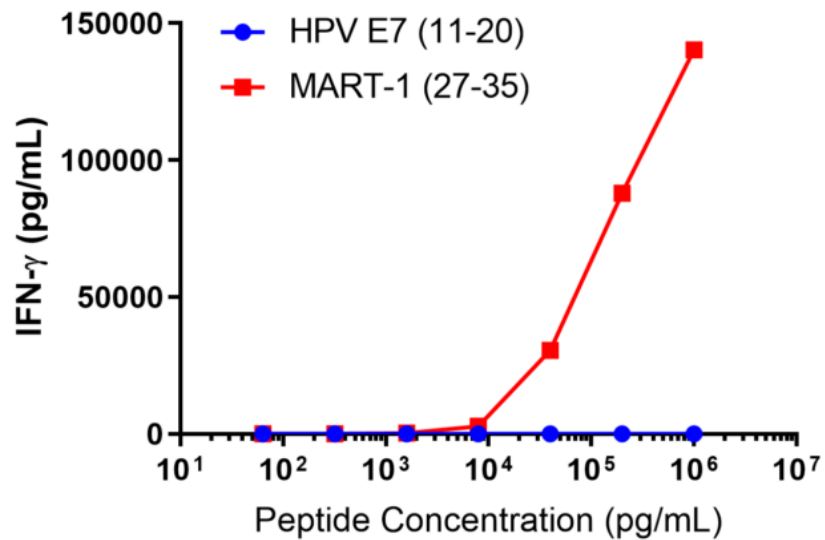
	Allele 1	Allele 2
HLA-A	*0201	*0201
HLA-B	*44	*15
HLA-C	*03	*05
HLA-DRB1	*0103	*0404

Donors are tested for the blood borne pathogens HIV-1 and 2, Hepatitis B, Hepatitis C and HTLV-1 and are negative. Cells should still be handled as if potentially infectious following biosafety level 2 procedures



E7(11-20) tetramer = HPV E7(11-20 peptide: YMLDLQPETT) HLA-A*0201-PE iTag MHC Tetramer (MBL International, Woburn, MA);
 MART-1 tetramer = MART-126-35 peptide (ELAGIGILTV)/HLA-A*0201-PE iTag MHC Tetramer (MBL International, Woburn, MA)

IFN-gamma Secretion



20,000 T cells were plated in a 96-well round-bottom plate alone or in the presence of 20,000 T2 cells, a B-LCL expressing HLA-A*0201) alone or in the presence of increasing concentrations HLA-A*0201 restricted MART-127-35 peptide (AAGIGILTV) or HLA-A*0201 restricted HPV/E711-20 peptide (YMLDLQPETT). After an overnight (18-24h) incubation period, supernatant was collected from each well. IFN-γ concentration was analyzed using the Meso Scale Discovery IFN-γ assay.

FOR RESEARCH USE ONLY. NOT FOR DIAGNOSTIC OR THERAPEUTIC USE