

Certificate of Analysis

Cell count	2 million per vial
Viability	88%
CD8+	71%
CD8+M1 Tetramer+	52.5%
CD8+E711-20 Tetramer+	0.3%
Sterility	Negative for Bacteria, Yeast, Fungi and Mycoplasma

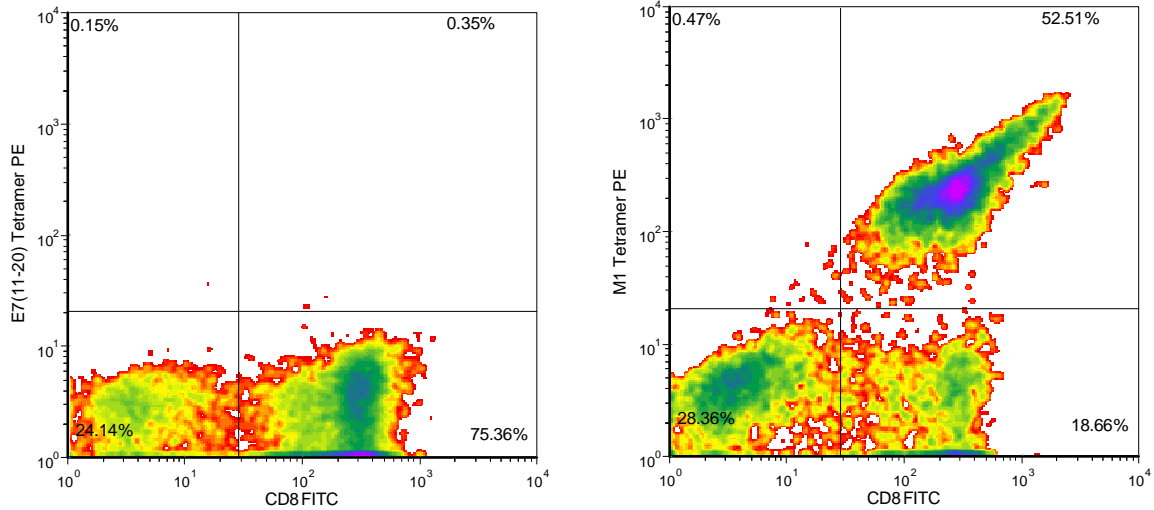
Donor Information

Donor ID	401
Age	29
Gender	Female
Race	Caucasian
Height	5'3"
Weight	277
ABO Type	A positive

HLA typing

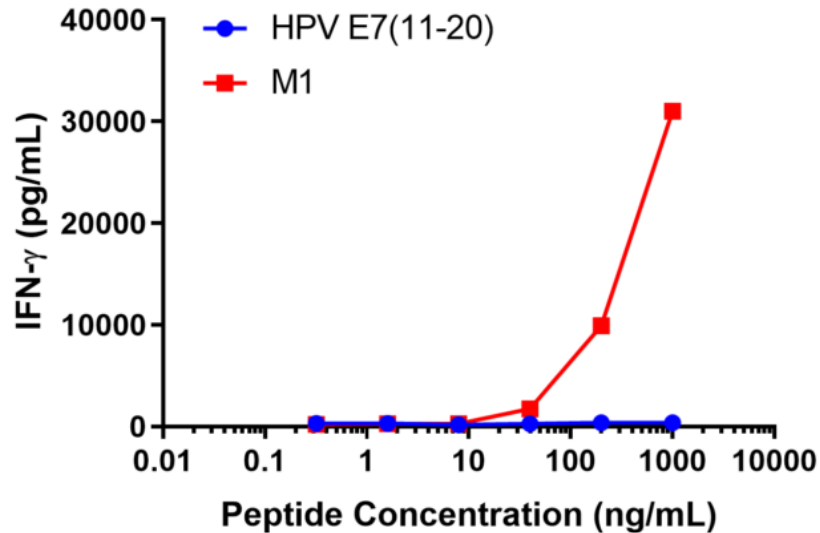
	Allele 1	Allele 2
HLA-A	*0201	*0201
HLA-B	*18	*40
HLA-C	*03	*07
HLA-DRB1	*03	*04

Donors are tested for the blood borne pathogens HIV-1 and 2, Hepatitis B, Hepatitis C and HTLV-1 and are negative. Cells should still be handled as if potentially infectious following biosafety level 2 procedures



E7(11-20) tetramer = HPV E7(11-20 peptide: YMLDLQPETT) HLA-A*0201-PE iTag MHC Tetramer (MBL International, Woburn, MA);
 M1 tetramer = M1/Flu 58-66 peptide ((GILGFVFTL)/HLA-A*0201-PE iTag MHC Tetramer (MBL International, Woburn, MA)

IFN-gamma Secretion



20,000 T cells were plated in a 96-well round-bottom plate alone or in the presence of 20,000 T2 cells, a B-LCL expressing HLA-A*0201) alone or in the presence of increasing concentrations HLA-A*0201 restricted M1/Flu 58-66 peptide (GILGFVFTL) or HLA-A*0201 restricted HPV/E711-20 peptide (YMLDLQPETT). After an overnight (18-24h) incubation period, supernatant was collected from each well. IFN- γ concentration was analyzed using the Meso Scale Discovery IFN- γ assay.