

Certificate of Analysis

Cell count	2 million per vial
Viability	93%
CD8+	94%
CD8+M1Tetramer+	0.4%
CD8+NYESO-1Tetramer+	66.0%
Sterility	Negative for Bacteria, Yeast and Fungi

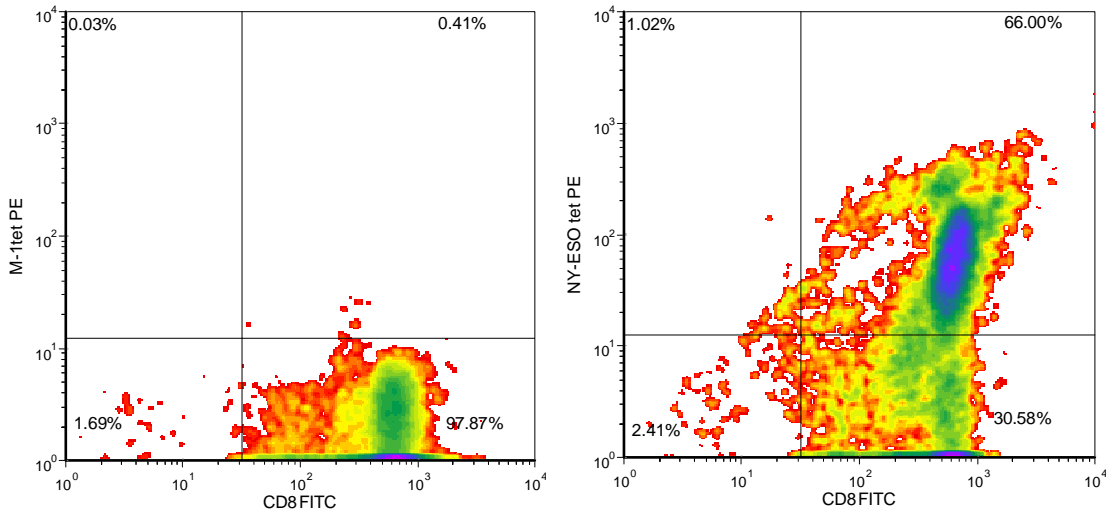
Donor Information

Donor ID	401
Age	29
Gender	Female
Race	Caucasian
Height	5'3"
Weight	277
ABO Type	A negative

HLA typing

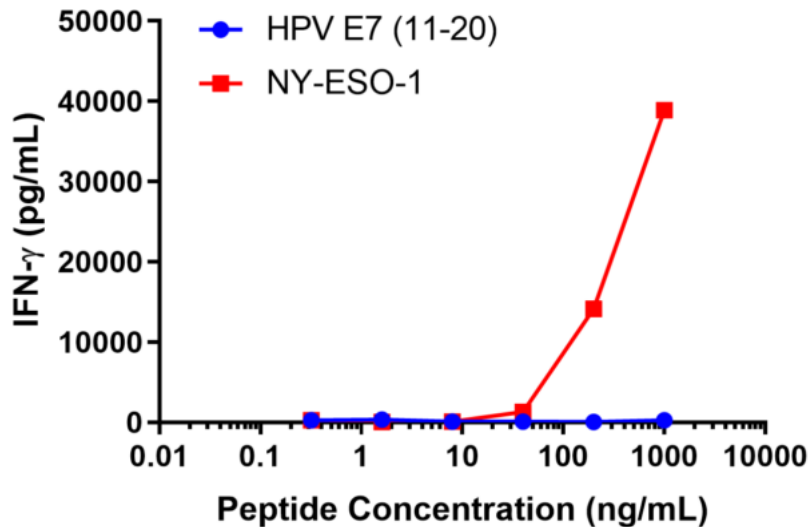
	Allele 1	Allele 2
HLA-A	*0201	*0201
HLA-B	*18	*40
HLA-C	*03	*07
HLA-DRB1	*08	*12

Donors are tested for the blood borne pathogens HIV-1 and 2, Hepatitis B, Hepatitis C and HTLV-1 and are negative. Cells should still be handled as if potentially infectious following biosafety level 2 procedures



M1 tetramer = M1/Flu: GILGFVFTL) HLA-A*0201-PE iTag MHC Tetramer (MBL International, Woburn, MA); NY-ESO-1 tetramer = NY-ESO-1 peptide (SLLMWITQC)/ HLA-A*0201-PE iTag MHC Tetramer (MBL International, Woburn, MA)

IFN-gamma Secretion



20,000 T cells were plated post-thaw in a 96-well round-bottom plate in the presence of 20,000 T2 cells, a B-LCL expressing HLA-A*0201) alone or in the presence of increasing concentrations of HLA-A*0201 restricted NY-ESO-1 peptide (SLLMWITQC) or HLA-A*0201 restricted HPV-E7₁₁₋₂₀ peptide (YMLDLQPETT). After an overnight (18-24h) incubation period, supernatant was collected from each well. IFN-γ concentration was analyzed using the Meso Scale Discovery IFN-γ assay.