



Anti CMV T Cells, Donor 153  
Catalog Number: 1049  
Lot Number: 4587FE20

## Certificate of Analysis

Cell count	1.4 million per vial
Viability	95%
CD8+	97.5%
CD8+NegativeTetramer+	2.2%
CD8+CMVpp65Tetramer+	87.2%
Sterility	Negative for Bacteria, Yeast and Fungi

### *Donor Information*

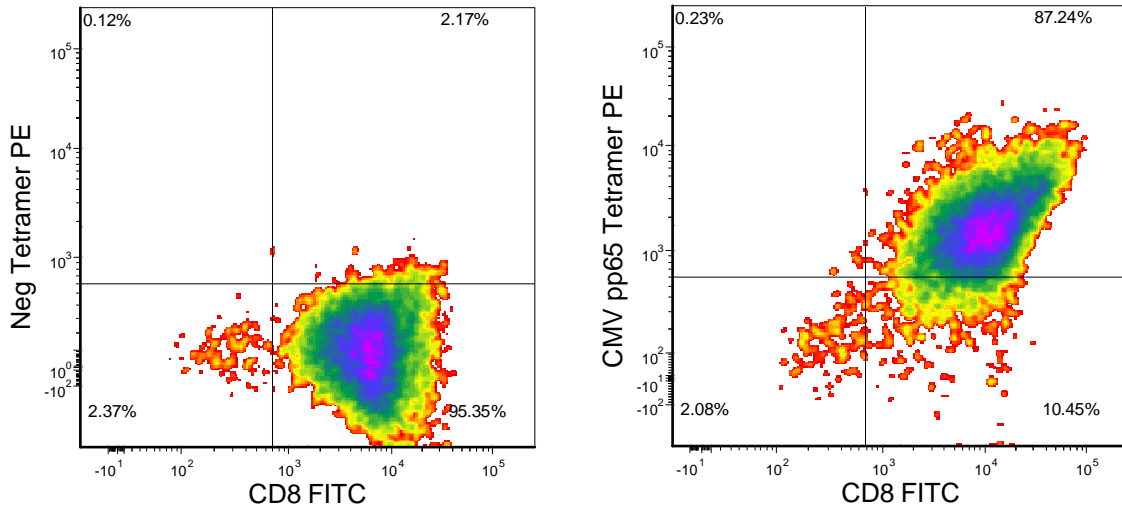
Donor ID	153
Age	32
Gender	Female
Race	Caucasian
Height	5'7"
Weight	205
ABO Type	O Positive

### *HLA typing*

	Allele 1	Allele 2
HLA-A	*0201	*3101
HLA-B	*15	*57
HLA-C	*03	*06
HLA-DRB1	*1501	*1301

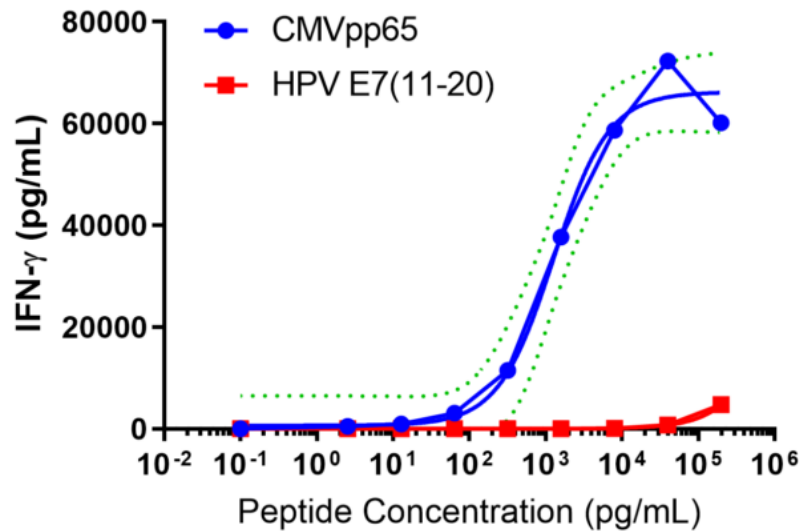
Donors are tested for the blood borne pathogens HIV-1 and 2, Hepatitis B, Hepatitis C and HTLV-1 and are negative. Cells should still be handled as if potentially infectious following biosafety level 2 procedures

FOR RESEARCH USE ONLY. NOT FOR DIAGNOSTIC OR THERAPEUTIC USE



Neg tetramer PE = HLA-A\*0201-PE iTag MHC Tetramer (MBL International, Woburn, MA); CMV A2 tetramer = CMV pp65 peptide (NLVPMVATV)/HLA-A\*0201-PE iTag MHC Tetramer (MBL International, Woburn, MA)

### IFN-gamma Secretion



20,000 T cells were plated post-thaw in a 96-well round-bottom plate in the presence of 20,000 T2 cells, a B-LCL expressing HLA-A\*0201) alone or in the presence of increasing concentrations of HLA-A\*0201 restricted CMV pp65 peptide (NLVPMVATV) or HLA-A\*0201 restricted HPV E7<sub>11-20</sub> peptide (YMLDLQPETT). Culture media used in this assay is RPMI 1640 + 10% FBS. After an overnight (18-24h) incubation period, supernatant was collected from each well. IFN- $\gamma$  concentration was analyzed using the Meso Scale Discovery IFN- $\gamma$  assay.

**FOR RESEARCH USE ONLY. NOT FOR DIAGNOSTIC OR THERAPEUTIC USE**